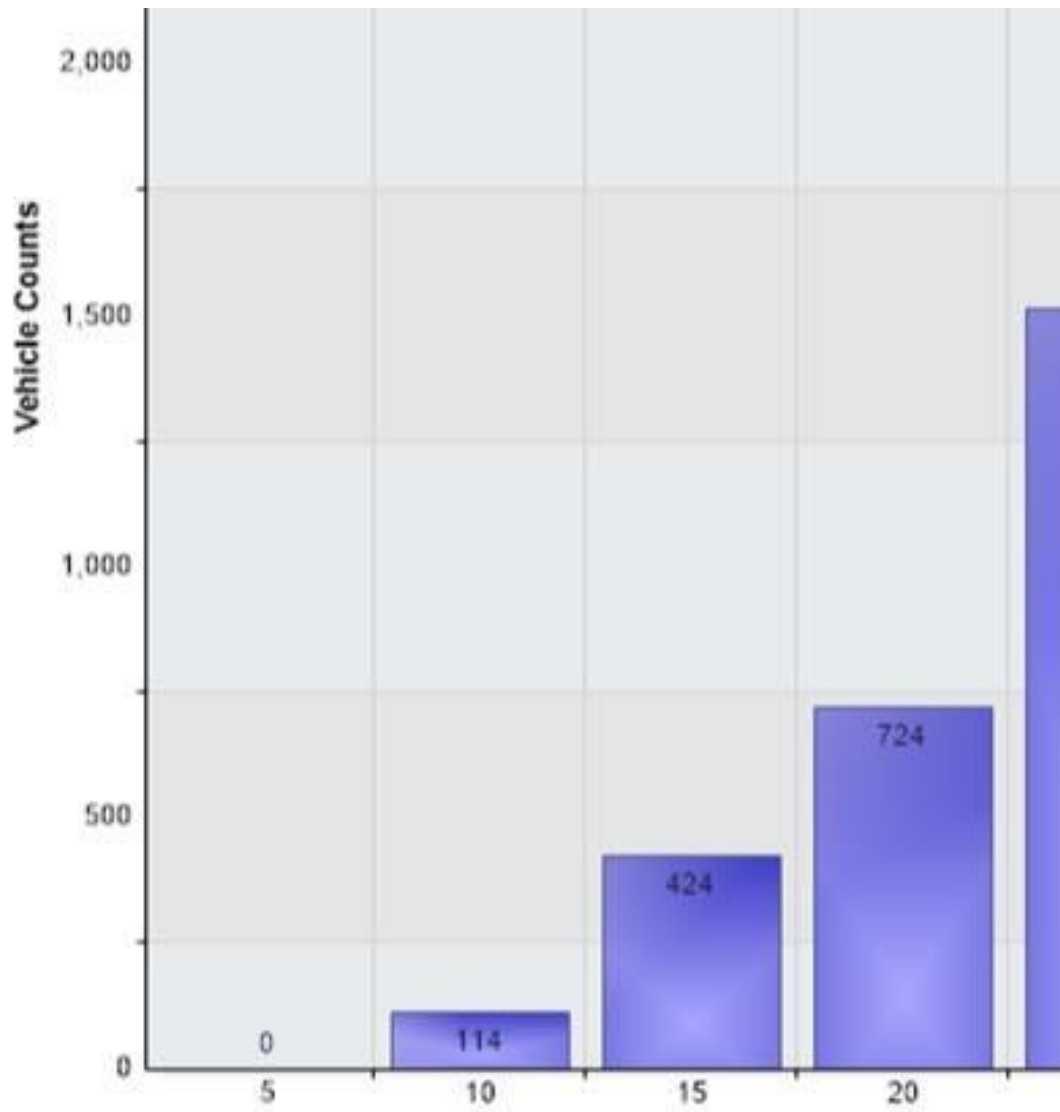


HGL SID facing East (May Close build out)

Date	Speed <30	Speed 30 to 35	Speed 35 to 40
Friday 30th June	750	175	35
Saturday 1st July	631	172	46
Sunday 2nd July	521	158	25
Monday 3rd July	740	217	60
Tuesday 4th July	757	195	47
Wednesday 5th July	759	191	39
Thursday 6th July	889	186	47
Totals	5047	1294	299

Speed Summary	Total >35mph	%	
Friday 30th June	975	50	5%
Saturday 1st July	860	57	7%
Sunday 2nd July	708	29	4%
Monday 3rd July	1029	72	7%
Tuesday 4th July	1008	56	6%
Wednesday 5th July	1000	50	5%
Thursday 6th July	1140	65	6%

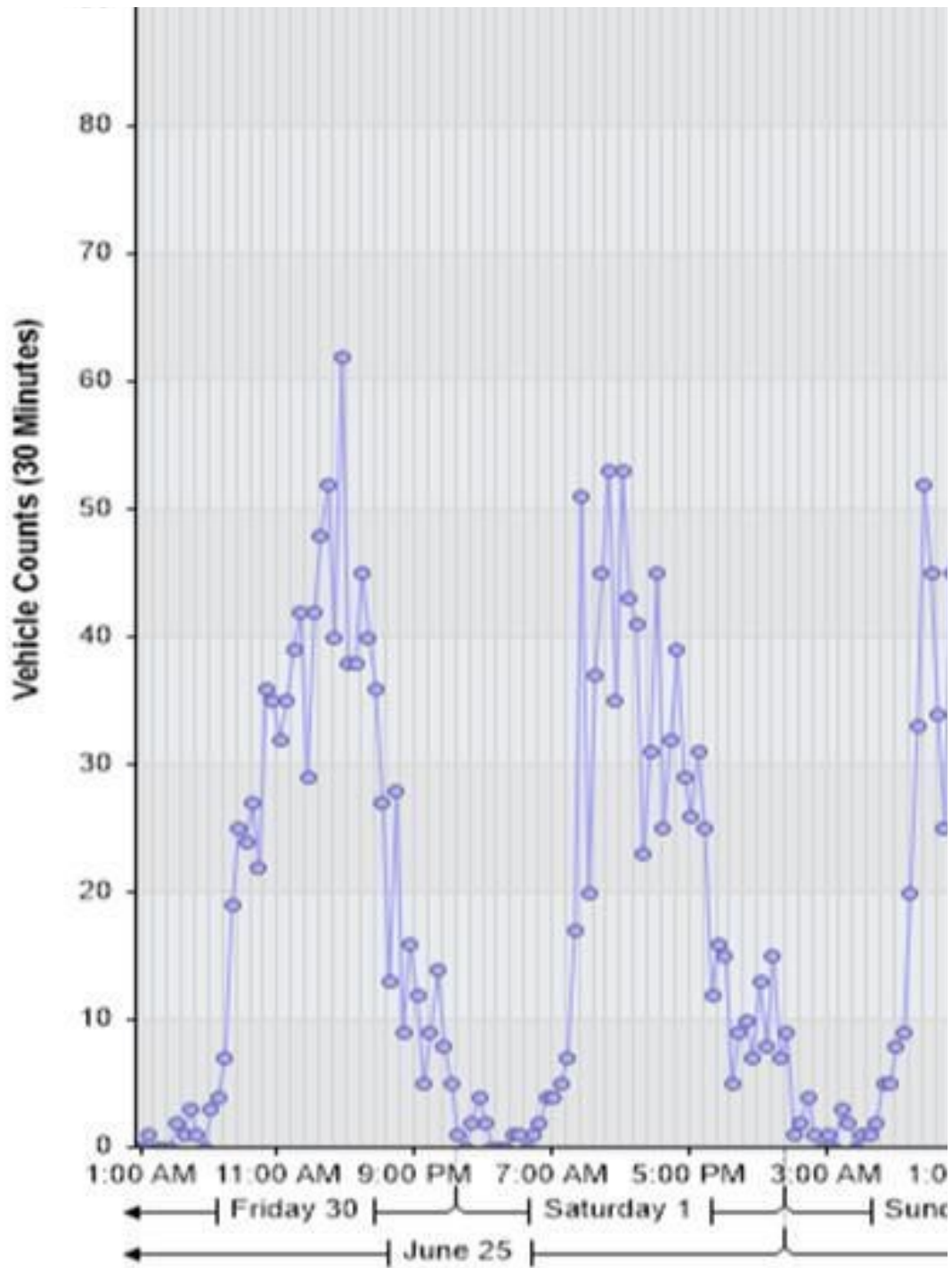




Zoom help

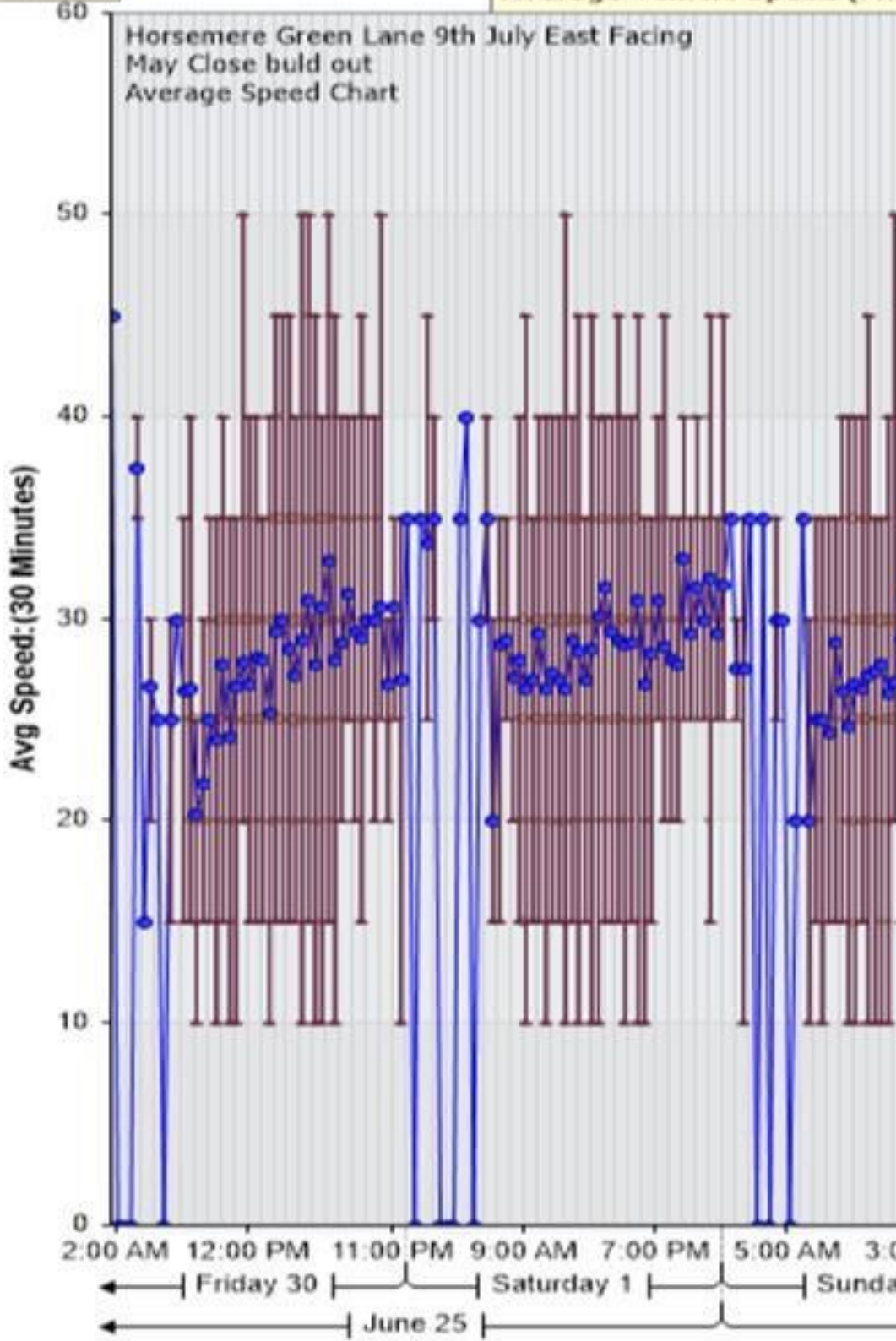
Vehicle Counts vs.

100  
 Horsemere Green Lane 9th July East Facing  
 May Close buld out  
 Vehicle Volumes  
 90



Zoom help

### Average Vehicle Speed (MPH)



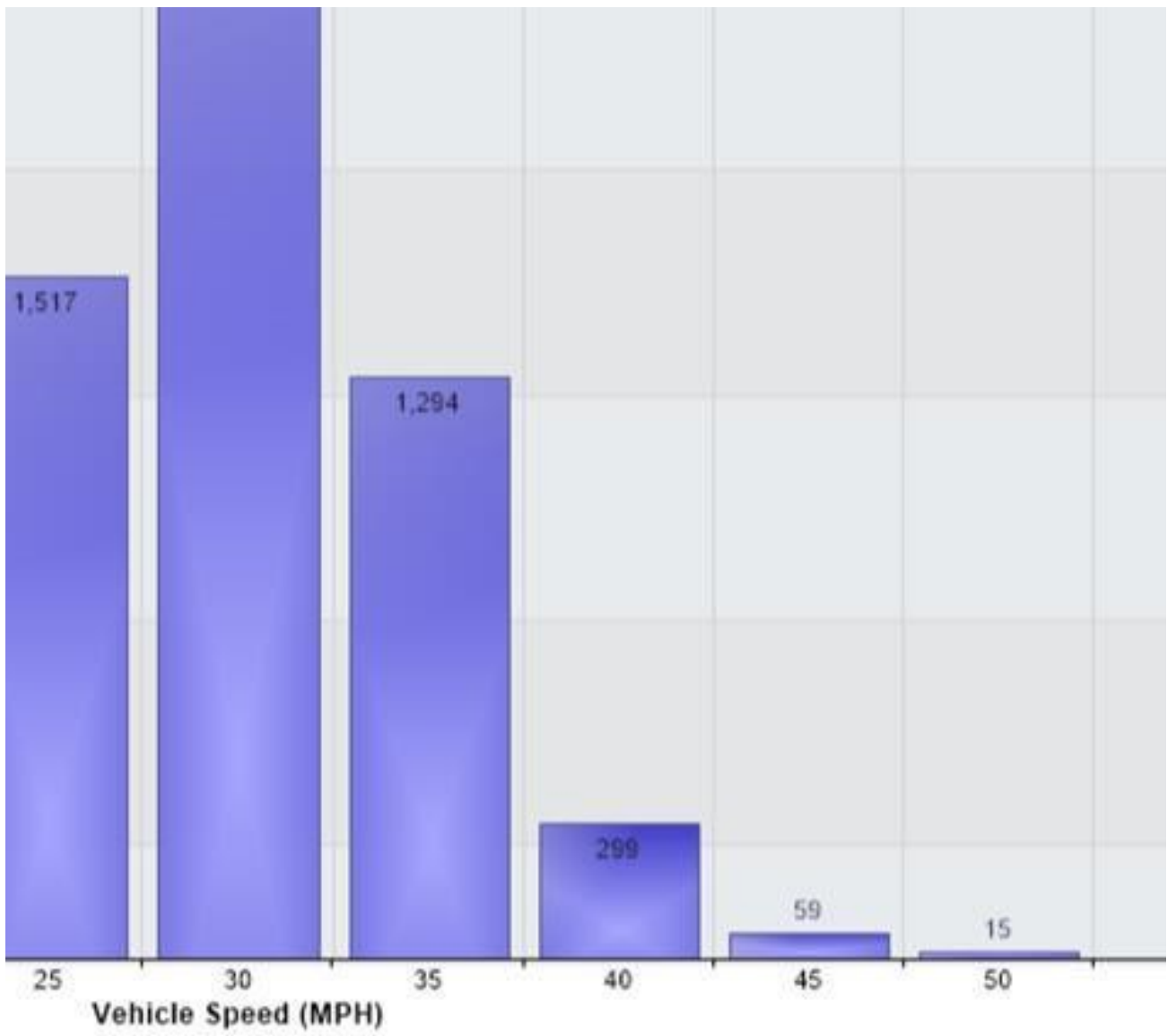


Speed 40 to 45	Speed 45 to 50	Speed 50 to 55	Speed 55 to 60	Speed 60 to 65
10	5	0	0	0
10	1	0	0	0
3	1	0	0	0
8	3	1	0	0
7	1	1	0	0
8	2	1	0	0
13	2	3	0	0
59	15	6	0	0

	7 day	5 Working day
Total Count	6720	
Average Daily	960	1030
Average Speed	25.6	
85% Percentile	32.6	
Morning Peak 11-12 am		72.3
Afternoon Peak 3-4pm		120
Weekend Peak 10-11 am		
Weekend peak 3-4 pm		

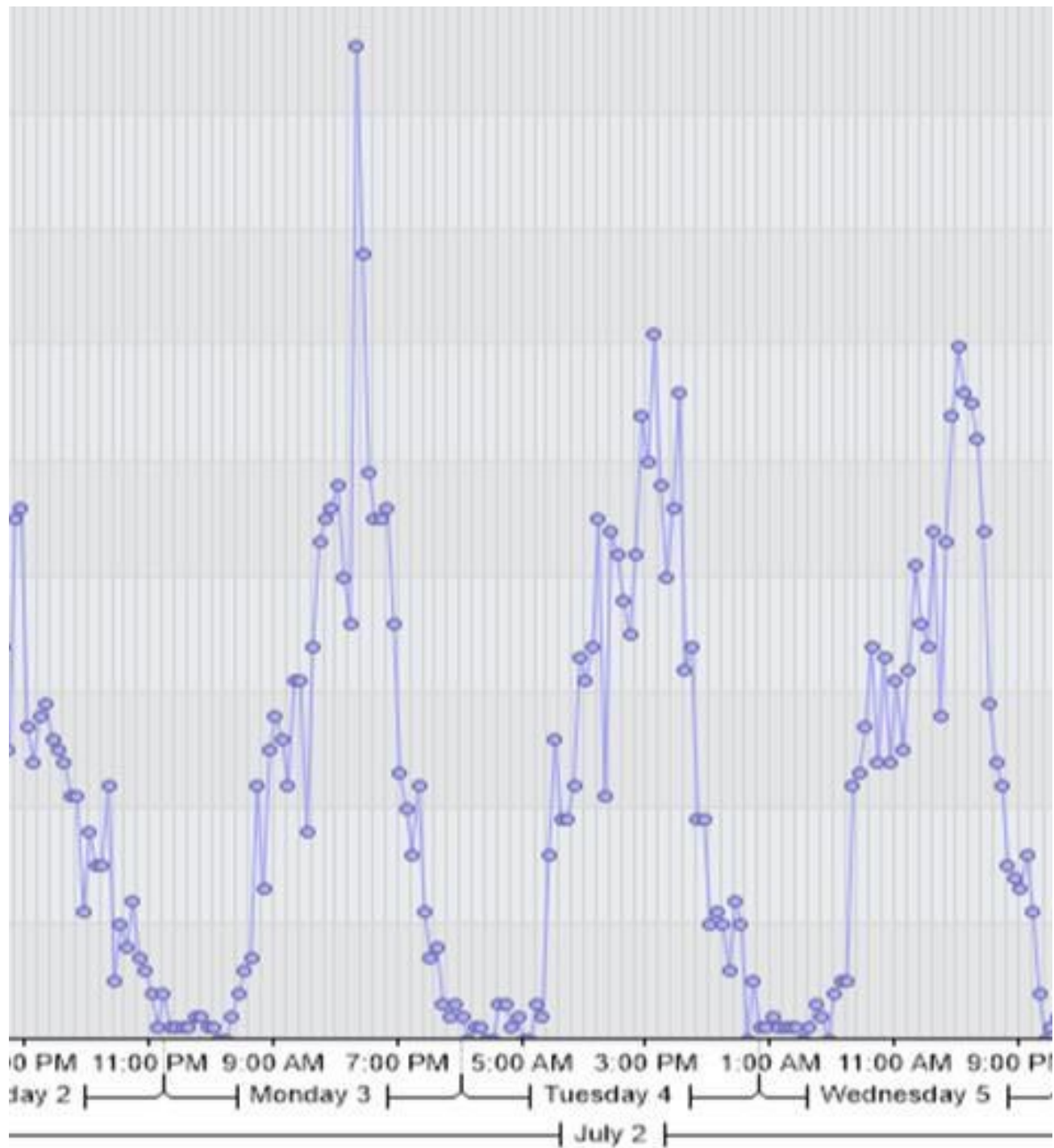
[ Facing: Incoming]

2,267					
-------	--	--	--	--	--



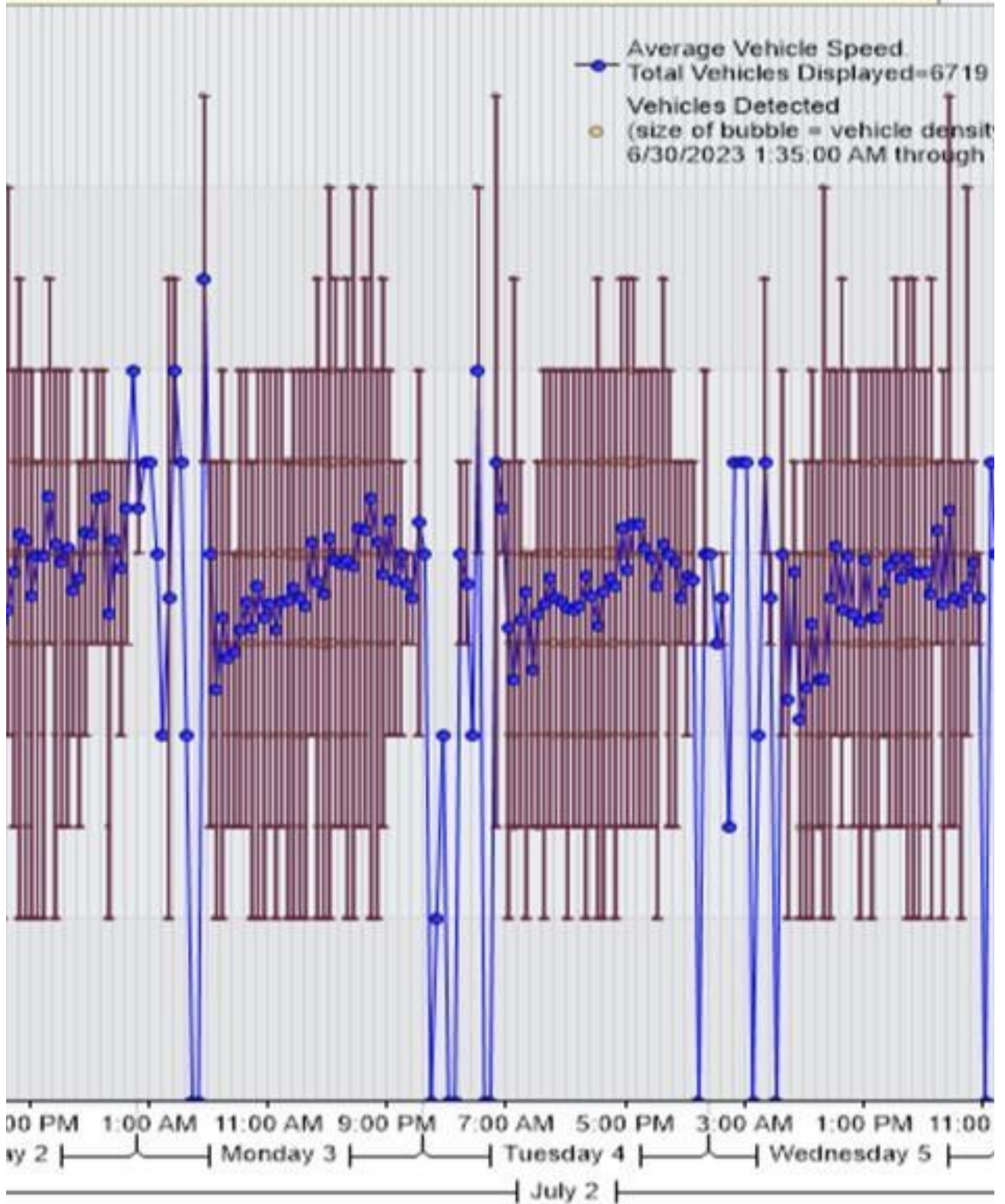
**Time [Horsemere Green Lane 9th July East Facing: Incoming]**

—●— Vehicle Counts vs. Time.  
Total Veh





PH) vs. Time [Horsemere Green Lane 9th July East Facing:Incoming]





Speed 65 to 70	Speed 70 to 75	Speed 75 to 80	Speed 80 to 85		
0	0	0	0	0	0
0	0	0	0	0	0
0	0	0	0	0	0
0	0	0	0	0	0
0	0	0	0	0	0
0	0	0	0	0	0
0	0	0	0	0	0
0	0	0	0	0	6720

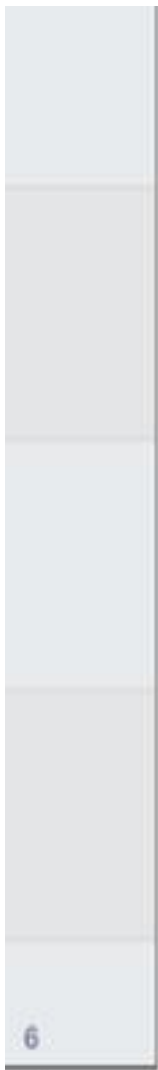
Weekend

784

91

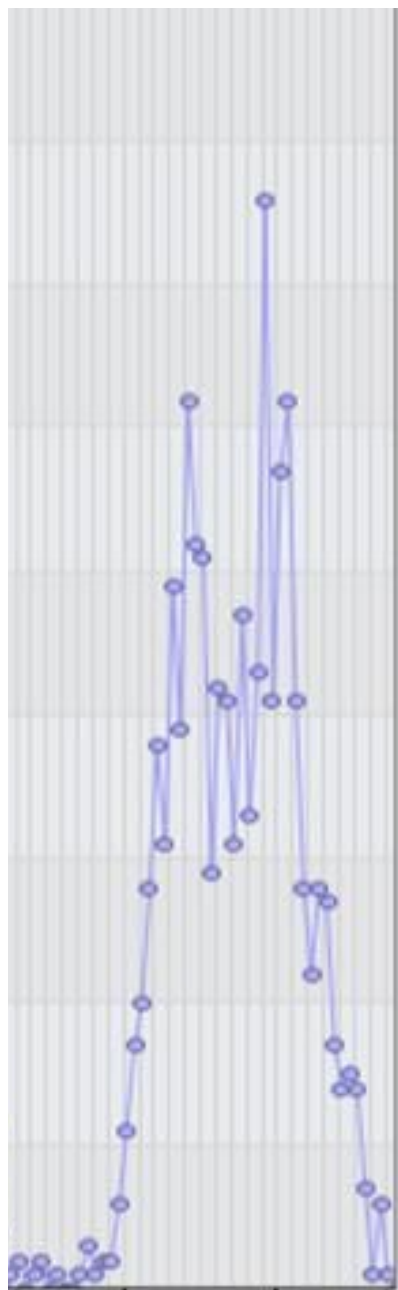
61





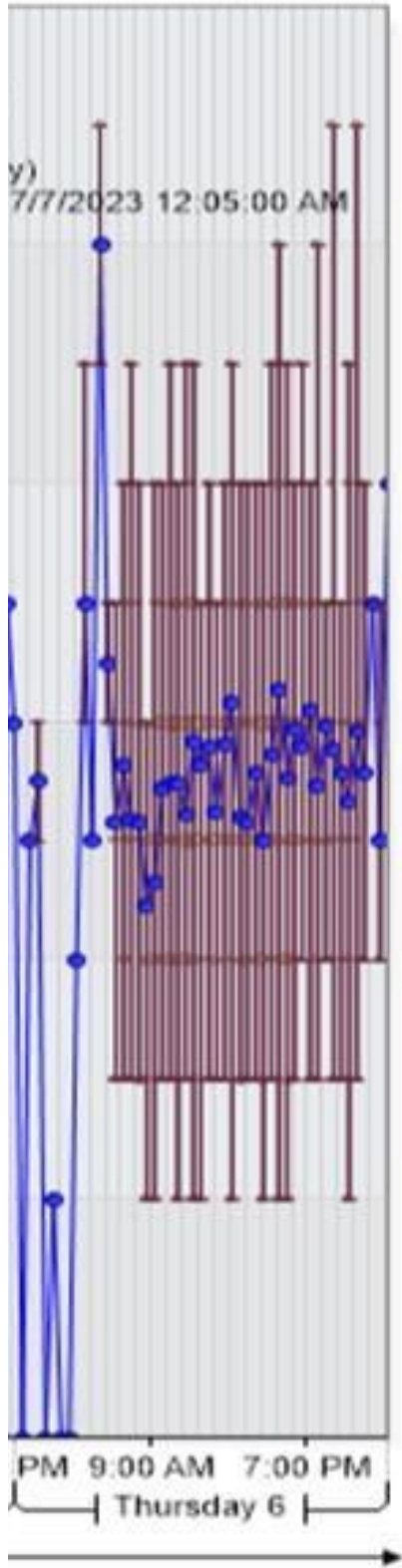
55

icles Displayed=6719



M 7.00 AM 5.00 PM  
Thursday 6







Total Count

975

860

708

1029

1008

1000

1140

6720