

# Clymping Village News



Spring 2024

# Church Farm Hub Safaris

Get up close to nature with our  
walking safaris!

Experience the wonders of the  
outdoors and learn what  
amazing creatures and habitats  
we have around us.

To find out more: search [churchfarmhub.com](http://churchfarmhub.com)

Rockpools

Birds



[churchfarmhub@gmail.com](mailto:churchfarmhub@gmail.com)



[@church\\_farm\\_hub](https://www.instagram.com/church_farm_hub)



Ponds

Insects

# Your Clymping Village News

## Welcome to the Spring 2024 issue, number 93



It has been a real pleasure to edit this newsletter over the past five and a half years, but it's now time for me to pass the reins to someone else. Volunteering as editor has allowed me to meet so many of you and to find my place in the community. I have always been really impressed with the willingness of Clymping residents to contribute their news and to remind us what a special place our village is.

If editing this publication is something you might be interested in, please get in touch with Colin Humphris or Nadine Phibbs (contact details are on page 22). You can do the job alone or, if you prefer, as part of a team. I'm very willing to help you get set up and to answer any questions you may have.

This issue is packed with details of community activities and ways to get involved. Wendy Robinson introduces a new Parish Council initiative called 'Wild About Clymping'; Anne Miller gives details of social events coming up; and you can get a look inside the refurbished Black Horse pub.

You'll also find a profile of boccia player Matt Berry, Clymping's very own Team GB member.

A very big thank you to all our contributors, and to our wonderful advertisers who, along with the Parish Council, make this newsletter possible.

See you around the village!

– **Lisa Eyre, Editor**

## Contents

- 5 Village Social Events
- 6 Call for Cricketers
- 8 Community First Responder
- 11 The Black Horse Reopens
- 14 Oystercatcher Remodels
- 15 On Safari in Clymping
- 18 Rector's Note
- 20 Chairman's View
- 21 Parish Council
- 23 Wild About Clymping
- 28 Asian Hornets
- 29 Profile: Matt Berry
- 31 Delivering aid to Ukraine
- 32 Open Studios Art Trail
- 34 Beach Report
- 36 Poem
- 37 School News
- 40 District Councillor
- 41 County Councillor
- 43 Foreman Homes Update
- 45 Church Hall
- 46 Word Search

Please send all submissions and advertising enquiries to **ClympingNewsEditor@gmail.com**. The deadline for the next issue (to be confirmed) is 4th May. Submission guidelines can be found at [www.clymping.org.uk](http://www.clymping.org.uk).

*Clymping Village News* does not accept any liability for errors, omissions or claims made by or against our contributors. The views expressed in the newsletter are not necessarily those of the Parish Council, except where indicated.

*Cover photo taken in Atherington by Bola Akinola*



# EASTER CELEBRATION

Sat., 23rd March, 2:30–4pm  
St Mary's Church, Clymping

Join us for a fun-filled afternoon of  
messy crafts, games, Lego,  
hot chocolate, hot cross buns  
and an egg hunt!

All ages welcome! Children must  
be accompanied by an adult



Bring your own mug  
if you can!



 CYF Messy Church



## Save the date!

**Yapton and District  
Cottage Gardeners  
Annual Show and  
Summer Fair**

will be held on  
Saturday 13th July on the  
Village Green, Yapton from 1.30pm.

The fair includes various stalls  
as well as entertainment,  
a dog show and refreshments.  
More details to follow later.  
[www.yaptongardeners.co.uk](http://www.yaptongardeners.co.uk)



theWI  
INSPIRING WOMEN

Meetings of the Yapton Village  
Women's Institute are held in  
Yapton Village Hall on the  
third Tuesday of the month  
between 10.00 and 12.00 pm.

Our next three meetings are entitled  
'Propping up the Stage', 'A Costa  
Rica Experience' and 'From Sheep  
to Knitting'.

We are a friendly group who  
welcome new members.

To find out more,  
please contact Maggie Brackley  
on 07789 790706 or email  
[presidentyaptonvillagewi@gmail.com](mailto:presidentyaptonvillagewi@gmail.com)



## Village life

# Come one, come all

*Anne Miller invites you to attend upcoming social events in the village.*

### Coffee mornings

The next community coffee morning at Clymping Village Hall will be held on Saturday, 9th March, at 10:30am. Come along for some Easter-themed fun, a coffee and a chat with your neighbours.

The next coffee morning after this will be on Saturday, 8th June.

Our coffee morning in December was a really fun event with a huge raffle. Many residents attended and had a lovely time, most of whom left with a prize or

two. Thanks so much to the local businesses and residents that kindly donated raffle prizes. There was also a Parish Council surgery available on the day so residents could talk about any local concerns.

### History evening

Come along to a fun and informative local history evening on Thursday, 11th April, at 7pm in the Village Hall. James Baird has kindly offered to give us all a look back in time to the village and wider area we live in, complete with old photos and displays. Light refreshments will be available, and you are welcome to bring your own alcohol. This will be a free event on a first come, first served basis,

but donations to cover the cost of the event will be gratefully received on the night. Please contact Anne Miller on [anniemiller010365@gmail.com](mailto:anniemiller010365@gmail.com) to express your interest so that numbers can be gauged.

### Summer event

The feasibility of a village-wide event for this summer is still being looked at. A provisional



*Clymping residents enjoyed a festive community coffee morning on 2nd December, complete with a grand raffle.*

date of Sunday 25th August has been booked at the Village Hall. This is definitely something that would be great to get organised, subject to sufficient interest. I am thinking of a large village picnic, with some games and music rather than a full-scale fete as previously mooted. Please get in touch with your thoughts, and look for more information to follow on the Parish

Council website ([www.clymping.org.uk](http://www.clymping.org.uk)) and on the Clymping Village Residents Group Facebook page.

### Film night

I am looking into the possibility of holding a film night in June to commemorate the 80th D-Day anniversary. More details to come.

## Sport

# Cricketers of Clymping, your village needs you!

.....

*Ian Gardiner invites you to come and play for our local cricket club.*

Clymping Cricket Club field two sides in the Sussex Cricket League and we're always on the lookout for new players.

Whether you're a budding or current cricketer, or think you might have retired before your time, we welcome players of all ages and ability to represent our wonderful village cricket club. We have a fantastic camaraderie at the club, some great social events throughout the year, one of the

most picturesque grounds in the county and use of the bar in the village hall.

Our grounds are located at Clymping Village Hall, Clymping, BN17 5SN.

You can find out more by contacting either 1st XI captain Alex Harris (07875 623050; [alexharris\\_86@hotmail.com](mailto:alexharris_86@hotmail.com)), or

2nd XI captain Neil Pierce (07795 552833; [neilpierce64@icloud.com](mailto:neilpierce64@icloud.com)).

Indoor nets are running now at Arundel Castle on Saturdays 9am–10am. Outdoor nets will run throughout the summer, from

around mid April.

Please come on down and be part of a friendly, welcoming village cricket club!



*Clymping Cricket Club play on the beautiful grounds at the Village Hall.*



# THE OYSTERCATCHER INN

---

★ Important notice for our customers ★

We will be closed from 4th March until  
30th March while our pub is being refurbished.  
Thank you for your understanding, and we look  
forward to welcoming you back to see the  
finished results!

Yapton Road, Climping, BN17 5RU

## Medical emergency

# Our own Community First Responder

*Clymping resident Ewout Benschop explains his new role helping the ambulance service save lives in our area.*

In November 2023 I noticed a BBC article saying that SECAmb (South East Coast Ambulance Service) was looking for Community First Responders to help local residents in case of a medical emergency.

As ambulances struggle more and more to get to an emergency within the target

of eight minutes for a C1 call (highest priority), Community First Responders can fill

the gap by appearing on the scene within minutes of a call to start all the necessary actions and observations that will help paramedics when they arrive.

With my history as a Navy medic, I thought I would be suitable for the role, so I applied. SECAmb was happy to have me on

board. After intense training by SECAmb paramedics, I passed all the exams and assessments to become qualified to deal with emergency calls for cardiac arrests, strokes, breathing and chest problems, asthma, diabetes, bleeding, allergies and injuries.

### What is a Community First Responder (CFR)?

CFRs are volunteer members of their community who are trained to respond to emergency calls in conjunction with SECAmb.

Because they respond in the local areas where they live and work, they are able to attend the scene of an emergency within a few minutes, often before the emergency services arrive. They are able to offer life-saving first aid, further increasing the patient's chances of survival. A CFR is equipped with a medical kit, AED and an oxygen cylinder.

SECAmb currently has more than 400 CFRs spread across Kent, Surrey and Sussex, and they attend roughly 20,000 emergency calls per year. Ten thousand of these are categorised as life-threatening, including more than 1,000 cardiac/respiratory arrest calls.

In case of a medical emergency always call 999! SECAmb will then alert CFRs in the area who are available to respond.



*Community First Responders can arrive within minutes.*





# *The Big Plant & Bake Sale*



**SATURDAY 20TH APRIL**

**11.00 AM - 2.00 PM**

**May Close, Climping, BN17 5TF**

**Join me for a fundraiser to  
support disabled veterans.**



***Delicious Homemade Cakes,  
Potted Flowers & Plants***

**All proceeds will help fund disabled veterans vital care services**

**01903 218444 / [www.careforveterans.org.uk](http://www.careforveterans.org.uk)**

**Registered Charity Number: 1072334**

# WOLF

ESTD 1834

PROTECT YOUR LEGACY



SILVER



CELEBRATING 190 YEARS

[WOLF1834.COM](http://WOLF1834.COM)



DISCOVER MORE

## Local pub

# The Black Horse reopens its doors

*Historic Sussex Hotels provides details about the renovated pub and answers our most pressing questions.*

The Black Horse is a Grade-II listed property dating back to the 17th century, when it was a smugglers inn. It was formerly the White Horse in 1851 and even the White Swan briefly in 2013.

Now owned by Historic Sussex Hotels, the pub has gone through an extensive renovation. The existing downstairs bar area has been stripped back, and the parquet wooden floor restored to its former

glory. We uncovered a beautiful chimney stack which now houses a double-sided wood burner stove, have installed a fabulous pewter bar, carefully polished, and have repaired the original wooden banquette seating.

We've also created a stunning oak frame extension, called The Ryebank, filled with light and height, overlooking the fields.

Whether it's for wellies and wine, a post-beach-walk beer, second breakfast or a Clymping night out, we invite everyone to come and enjoy the warmth and buzz of The Black Horse.

In the bar you will find cosy corners and deep sofas, perfect for a quick pint, delicious

supper or a lively catch-up with friends. You'll find an interesting choice of craft beers, fine ales, Sussex wine, locally inspired cocktails and pub classics.

Move through to the Ryebank for a bite to eat in the newly created and stunning oak-framed room, which looks out over the terrace and the local rife. And we have created a glorious pink private room,



*The pub provides a variety of seating options and a warming fire.*

perfect for cosy celebrations, a fun family lunch or a noisy dinner party.

Our full-flavour menus are inspired by the seasons, bursting with traditional pub grub favourites and local ingredients.

Visitors can stay in one of our seven bedrooms, each different and entirely reconfigured, with fresh new bathrooms and beautiful wallpapers inspired by nature, designed in Clymping by our friend and neighbour Fiona Howard, and locally sourced antique furniture.

This pub has historically been a popular haunt for locals to gather, and a welcoming place for the community and visitors alike. We're excited to re-ignite this tradition. Doors open on Thursday, 7th March.

## Q&A with Pontus and Miranda Carminger, Joint Managing Directors of Historic Sussex Hotels:

### Clymping Village News: Why did Historic Sussex Hotels buy the Black Horse?

*Pontus and Miranda:* We have had our eyes on The Black Horse for many years. There have been very few opportunities over the years, and this was good timing for us.

### What was the most difficult part of the renovation?

The most difficult part was being forced to put the renovation works on hold during the pandemic and lockdowns. During the renovations we came across a chimney

that was flying at first floor level but not supported to the ground. And another chimney was held onto the side of the building with a bit of rendering.

### Did you find anything of historical interest during the renovation?

Unfortunately, nothing of significance that we are aware of. We worked closely with the builders to retain and restore as many original features as possible.



*A cosy corner of the pub*



*A renovated guestroom, with wallpaper by Clymping resident Fiona Howard*

### How do you envision The Black Horse integrating into Clymping?

We are keen that The Black Horse plays an important part in the community, and that it reclaims its place at the heart of the community. We want to create a pub where locals come for a drink and to meet friends, the place for a no-nonsense but delicious lunch or dinner, as well as the place to celebrate a birthday



or anniversary and have fun.

Luca Pearson, our pub manager, is keen to arrange plenty of lively evenings throughout the year with all sorts of entertainment.

**What style of cuisine will you serve?**

Astonishingly delicious pub grub, from our chef, Mark Bradley.

**Will the pub be dog friendly?**

Yes, of course! Welcomed with lots of cuddles and treats.

**Will it be child friendly?**

Yes, of course! Smaller portions if there is something they fancy on the main menu, or we have a kids' menu.

**What kind of live music will you have?**

A wide and interesting range.

**Will you have plenty of parking?**

There is parking at the pub, but we do appreciate more will be required and are working on additional parking at Bailiffscourt.

## Pub report

# Phoenix? Black Horse!

*Local resident Peter Mules got a sneak preview of the pub before its grand reopening and provides this report.*

After six long winters, the The Black Horse in Climping Street will reopen its doors in March. For those of you, like me, bereft for so long, the wait will be well and truly worth it. New man in the saddle, manager Luca Pearson, bubbles with positivity about the project, with a superb refurbishment nearly completed and exciting plans afoot.

The pub is now part of Historic Sussex Hotels and has undergone a complete

makeover, sporting seven bedrooms, a brand-new kitchen and a delightful, traditional English pub ambiance.

Each of the bedrooms upstairs has been exquisitely and individually decorated, complete with Clymping-inspired wallpaper designed by local resident Fiona Howard. Downstairs features a seriously long bar and loads of classic antique furniture, together with the original double-sided fireplace. The front section is a proper pub (local friendly!) and in the extension, known as The Ryebank, you will be able to book tables for breakfast, brunch, lunch and dinner.

The menu features top-quality dishes, pub grub with gluten-free and vegan options, all paired up with an extensive



wine list. Sunday is devoted to roasts – three meats and vegetarian and vegan alternatives. There will be a variety of ales (including local brews), lagers, cider and spirits, tea and coffee – yes, coffee. Not just any coffee – Edgcumbe's coffee (I recommend the Colombian Dark) – and the experience will be a joy for connoisseurs.

Fridays will welcome the return of live music, and the plan is to also conduct regular pub quizzes. I quizzed Luca as to the mood among his team as we approach the reopening, and he was unequivocal that it is 'excitement' – his motto is 'no stress'.

It's a 'no worries' from me, and I very much look forward to buying you all a pint!

## Another pub report!

# What's going on at the Oystercatcher?

*Peter Mules, always happy to visit a pub, asked the Oystercatcher about their upcoming renovation.*

You may have noticed a lot of work going on at the Oystercatcher pub recently. The entire building, located on the A259 at the western end of the village,



*New thatching at the Oystercatcher*

has been re-thatched, and the men working there did an extraordinary job in difficult weather conditions. The next

phase of the 'extreme makeover' involves the pub shutting down for most of March,

during which time extensive refurbishment inside and out will take place.

Manager Megan Yates tells me that the dining area will be completely redecorated, along with the installation of new tables, chairs and artwork. The stone floor will be cleaned and refinished, the bar will be updated and a cocktail station installed. The outdoor seating area will be resurfaced and landscaped, and new benches, chairs and umbrellas brought in. There will also be an emphasis on making the establishment more energy efficient, including installing solar panels and new kitchen extractors and boilers.

The pub will offer a brand-new menu when it reopens, and will host lots more live music in future.

The Oystercatcher will close on 4th March and officially reopen on 31st March. Exciting times indeed at the 'OC'!

# Nature walk

## On safari in Clymping

*Lisa Eyre reviews a recent walking safari offered to Clymping residents by Church Farm Hub.*

Like many of us in the village, I enjoy a good walk down to the beach and along the public footpaths through the fields and woods. I love the peacefulness and beauty of our local environment. So, when I found out Eddie Baird of Church Farm Hub had started conducting walking safaris in Clymping, I was intrigued.

I signed up for his free walk for local residents on Saturday, 10th February, along with my husband and our two children. On the day, about ten of us met



*Eddie explains how the land and marine environments interact.*

Eddie down at the beach, ready for our two-hour safari in the crisp morning air. Being Clymping residents, we were pretty familiar with the landscape

already. But even with local knowledge, it was clear while walking how much better it is to have someone on hand who has an even deeper understanding of our surroundings and can tell you exactly what you're looking at.

Eddie took several opportunities to explain how all the various local wildlife and habitats interact. For example, he observed that



*Showing the opening to a mouse burrow*

a piece of seaweed we saw lying on the beach was evidence of the re-establishing kelp forest finally starting to thrive off our coast. The kelp forest provides important nursery grounds for fish, and more fish means more food for the sea birds that visit our coast. He then turned to the rewilded field just north of the beach – one of our area's rare coastal grasslands – and drew our attention to the linnet and skylarks on the ground, examples of birds who now choose to make their winter homes in the shelter of the natural vegetation. >>

We walked up Bread Lane and then eastwards onto the public footpath running across his family's farm. Eddie passed his binoculars around so we could admire a kestrel he had spotted atop a distant tree. He then upended a small and insignificant-looking log to reveal the entrance to a mouse burrow, explaining that these creatures are the basis of the field's entire ecosystem. Mice provide food for hunters such as kestrels, of course, but they also scatter the seeds that turn into plants and trees, contributing significantly to biodiversity.

Soon after this, Eddie caught sight of a cattle egret flapping its wings in a marshy patch of field. These birds, once a rare sight, are becoming more frequent here because there are more insects in the fields for them to eat.

We continued on the muddy trail across the north of a copse, as Eddie wanted to show us a badger sett, one of three on the farm. Their presence, he said, is a good indicator of a healthy ecosystem. Here he mentioned an environmental initiative called 'Weald to Waves', which his family is heavily involved with and which seeks to build a wildlife corridor from Clymping through 100 miles of Sussex countryside. The aim is to connect wild habitats that are otherwise cut off from each other. Building wildlife bridges over busy roads, for example, would help

animals such as badgers wander further in greater safety.

It was also on this muddy trail that my nine-year-old daughter found a new friend – an earthworm – which she cared for on the rest of the walk by enclosing it in her hands, deliberately made as muddy as possible. My six-year-old son likewise revealed to Eddie a cuttlefish shell he had lifted from the beach as his own walking companion.

Eddie paced the walk well, not letting

anyone (including those distracted by worms and interesting-smelling marine remnants) fall too far behind. He chatted casually with people as we ambled, revealing layers of knowledge in his answers to our questions.

We stopped to admire a family of roe deer about 200 yards away, and Eddie took the opportunity to talk to our group about how nature

interacts with itself, and how even dead things – animals, trees – contribute to the overall balance.

Next we headed through the woods on the eastern side of the farm, with Eddie pointing out herons in their treetop nests and evidence of woodpeckers making good use of dead trees.

When we came out at Rope Walk, just off Ferry Road, I had a chance to chat with Eddie about his walking safaris. He



*The group walks carefully up the protected area of the dunes.*

is clearly passionate about learning all he can about the complexities of our environment, but also about sharing it with others so that they can feel a stronger connection with nature and a stronger desire to protect it. He hopes to embark on a conservation biology course at university next autumn, with plans to come back regularly to continue his safaris at Church Farm Hub.

The final stretch of our walk took us westward across West Beach, near the sand dunes, and then through a fenced-off, protected part of dunes which we had special permission to enter. Eddie encouraged us to contrast the publicly accessible dunes with this protected habitat. Where the open dunes were a relative monoculture of long grass – the result of vegetation getting

regularly trampled by people and dogs – the protected area was home to a complex ecosystem, including a variety of trees, as well as mice, foxes and sand lizards.

Eddie plans to conduct walks for locals every six months, to show habitats at different times of year. He also offers a range of other safaris which might be perfect for a family outing, or for out-of-town friends who would appreciate an expert guide to our natural surroundings. The safaris range from general nature walks to outings focused on insects or the coast and rock pools. There's also a safari dedicated to showcasing rewilding and nature-friendly farming efforts on the Bairds' farm. Information and booking forms for these walks can be found at [www.churchfarmhub.com](http://www.churchfarmhub.com).

**OPEN 7 DAYS A WEEK**  
**THE OLD BARN | FORD LANE | BN18 0DF**



**EDGE**  
TEA & COFFEE

## THE EDGE CAFE

ENJOY A DELICIOUS COFFEE,  
ROASTED FRESH ON SITE, WHILST  
RELAXING IN OUR SPACIOUS  
CAFE, WITH INDOOR AND  
OUTDOOR SEATING.

TRY OUR RANGE OF TASTY CAKES  
AND LIGHT BITES, BAKED LOCALLY.

**Check online for opening times:**  
[www.edgcumbes.co.uk](http://www.edgcumbes.co.uk)

**CAFÉ • ROASTERY • LOCAL STORE • SHOP ONLINE**

# RECTOR'S NOTE



*Rev. Richard Hayes reflects on phrases that might be used to sum up a life, and the role of kindness.*

I have a casual interest in what people have inscribed on their headstones. I remember having a collection of funny ones that I would use occasionally in sermons. Apparently the most popular epitaph is the famous Spike Milligan 'I told you I was ill', found on his headstone in the churchyard at Winchelsea.

It makes me think about simple phrases that might be used to sum up a life. I'm not sure what you might have, but it's worth reflecting about it, just in case!

From simple and self-deprecating to pompous and overblown, the choice is yours – or for those who come after you. I rather like Winston Churchill's, which I imagine were his own words: 'I am ready to meet my Maker. Whether my Maker is prepared for the great ordeal of meeting me is another matter.'

It does raise the question as to what others might have inscribed about us. Not how I would sum up my life, but the words others would use.

How am I investing in the lives of others, and what effect am I having in this world?

Of course, there are some things you simply can't say on a headstone, so if you're a mean, selfish and nasty sort of person,

then you might get away with something really bland and nondescript! But what *would* you like to read, or hear, about your life lived?

How about 'He was a nice person?'  
Just a nice sort of guy.

When I was young, the description 'nice' was *not* what you wanted to hear from someone you fancied. If they said 'you're nice', you knew it was code for 'but not boyfriend material!' But now I realise that it would be a simple

but profound thing for someone to say of anyone.

**Looking around this world I can** honestly say we could do with a lot more nice people. People who care, think of others, and are gentle and humble and kind.

That's the other word that I would love to see become fashionable: 'kind'. At Yapton school it is one of their keywords as they ask the following of each other:

Before you speak (or write), THINK:

T – is it *true*

H – is it *helpful*

I – is it *inspiring*

N – is it *necessary*

K – is it *kind*

“ *How am I investing in the lives of others, and what effect am I having in this world?* ”



We teach this to our children, but shouldn't we all live by such a rule? Surely we can, and must, agree that without such a rule, humanity will fail each other? It is certainly at the heart of the Christian faith, and any rejection of such principled behaviour is a denial of that faith.

As the good book puts it: 'Finally, brothers and sisters, whatever is true, whatever is noble, whatever is right, whatever is pure, whatever is lovely, whatever is admirable – if anything is excellent or praiseworthy – think about such things' (Philippians 4:8).

*Rev. Richard Hayes is Rector of the Benefice of Clymping and Yapton with Ford.*

## REGULAR SERVICES IN THE BENEFICE

### 1st & 3rd Sundays of each month:

Family Service at Yapton, 9:30am

Parish Communion at Clymping, 11am

### 2nd & 4th Sundays of each month:

Parish Communion at Yapton, 9:30am

Family Service at Clymping, 11am

### Every Thursday

Holy Communion at Ford, 10am

Please visit [www.cyfchurches.org.uk](http://www.cyfchurches.org.uk) for the schedule of Holy Week and Easter services.



## Hiking Hounds



Dog walking and house visit services

Hiking Hounds is a new dog walking/pet sitting service based in Clymping, covering surrounding areas.

- Fully insured
- Dog first aid trained
- Completing a course in dog behaviour

I am also qualified in equine management and offer services for your horses too.

Please get in touch for further information.

Mobile: 07514 896459  
Facebook: Hiking Hounds  
Instagram: @\_hikinghounds\_



# CHAIRMAN'S VIEW



*Colin Humphris focuses on several issues important to the village.*

Well, at least 2024 has started a little drier than the end of last year. Arun District Council's (ADC) new flood forum has started to meet, and it will be very important to keep a focus on the effective design and implementation of drainage schemes for all the new developments underway across the district.

It's important in Clymping, as it appears that the Longwood Close development has so far failed to deliver its required drainage scheme, and this directly impacts drainage along Horsemere Green Lane. The Parish Council (PC) is pressing ADC on this matter. We have the Foreman Homes proposals for 300 homes in mind. Although ADC has now approved the detailed design and other reserved matters, the conditions for an approved surface water drainage scheme and for sewage remain outstanding. Suitable designs need to be approved before any works start, and be effectively enforced.

These are now the PC's primary focus, along with more detailed proposals for the Ford development that will shortly be available for public discussion. It is important also to understand to where the water drains. For Clymping, this is eventually either the river Arun or the sea, and both are restricted by the tides. We live on a coastal flood plain.

**Down at the beach the landowners** worked together, with support offered by the PC, to ensure shingle is available to maintain the protective bunds. As you have probably noticed, the bunds were set back several metres during the Environment Agency's autumn work programme. This reduces the coastal pressure on them and slows the rate of shingle loss. The new layout worked effectively through the January storms. Focus is now shifting to the longer term, and the report by Herrington Consultants which was commissioned by the PC is worthy of your consideration as we widen this debate. You can read the report on our website, [www.clymping.org.uk](http://www.clymping.org.uk).

**The PC followed the initial hearing of** the examination of the Rampion 2 wind farm proposals with interest and as a result updated its evidence to the Government Inspector. This can be viewed on the PC website and focuses on the potential disruption to village life, compounded by the housing and A259 proposals that could be underway on a similar timescale.

**The PC was disappointed that its** proposals for Horsemere Green Lane were not supported by West Sussex County Council (WSCC). It was one of 61 applications from across the county, of which

12 were considered of higher priority. The PC work group will be meeting WSCC shortly to discuss a revised way forward for a highways scheme, and we will be applying to ADC for funding to complete a pavement the length of the lane.

**On a positive note, you will soon notice** works to renovate the children's play-ground at the park. This will start in early March, funded jointly by ADC, the Village Hall and PC. The PC will be taking over responsibility for the maintenance of the new facility from ADC.

For the community, the next coffee morning at the Village Hall will be on 9th March, and a village history evening is proposed for 11th April. Do also make use of the well-stocked book swap cabinet at the Pound on Climping Street. You will

also see that we are keen to engage the community in activities relating to our natural environment, starting with our garden friends the hedgehogs.

I know the other councillors will join me in welcoming Jane Mules (who lives in Climping Street) as a new councillor. We have just one vacancy remaining.

Finally, I want to thank Lisa Eyre, our *Clymping Village News* editor, who is standing down after setting such high standards for a village news magazine. We are indebted to her for all she has achieved and wish her the very best in all her other activities. This creates the opportunity for a new editor/editorial team. Please get in touch if this is a task you would relish.

*Colin Humphris is chairman of Clymping Parish Council; tel 01903 733848.*

## PARISH COUNCIL



*Nadine Phibbs, Clerk to the Council, discusses the Clymping Parish Council precept for 2024–2025.*

**A**nnual council tax notifications will be dropping through our letterboxes soon. Part of the charge that you will see on your bill is a local precept set by Clymping Parish Council and collected on our behalf by Arun District Council.

Clymping Parish Council sets its precept for the forthcoming financial year in January. The precept provides most of the council's income for the year and enables us to deliver Parish Council services, main-

tain and enhance the village environment and provide for the day-to-day running costs of the Parish Council.

At our meeting held on 30th January, the Parish Council approved a slight increase in the precept for 2024–2025. We recognise that the cost of living has affected residents, as well as district council and county council budgets. However, this increase will allow the PC to take forward village projects. >>

The precept will increase by £2,240, from £16,760 to £19,000 and will represent a local cost of £42.32 per Band D equivalent (£38.09 for 2023–2024). The percentage increase on the previous year is 11.1%.

Any changes to other charges that make up the total council tax bill will be published by Arun and West Sussex councils.

## Council meetings

The Clymping Parish Council meeting dates for the rest of 2024 are as follows:

**19th March**

**14th May**

**23rd July**

**24th September**

**19th November**

Meetings begin at 7:30pm in St Mary's Church Hall, Clymping. The agenda for each meeting will be posted at [www.clymping.org.uk/full-council-meetings/](http://www.clymping.org.uk/full-council-meetings/) at least three days before the meeting.

## Defibrillators

Two automated external defibrillators (AEDs) are available in Clymping for public use 24 hours a day. One is located on the front of the Village Hall, and the other is at Climping Park estate, just off the A259, on the side of a building near the entrance to the estate. Please make a note of these locations – it could save a life!

The Parish Council is exploring the option of installing two further AEDs in the near future.

## Parish Council members

**Henry Burrell**

01903 718755

[hsburrell.CPC@gmail.com](mailto:hsburrell.CPC@gmail.com)

**Tim Hibbert**

(Vice Chairman)

07947 130404

[thibbert.CPC@gmail.com](mailto:thibbert.CPC@gmail.com)

**Colin Humphris**

(Chairman)

01903 733848

[chumphris.CPC@gmail.com](mailto:chumphris.CPC@gmail.com)

**Anne Miller**

[annemiller.CPC@gmail.com](mailto:annemiller.CPC@gmail.com)

**David Miranda**

07768 981923

[dmirandacpc@gmail.com](mailto:dmirandacpc@gmail.com)

**Jane Mules**

[jmules.cpc@gmail.com](mailto:jmules.cpc@gmail.com)

**One vacancy**

**Parish Clerk**

**Nadine Phibbs**

07776 194192

[clympingpc@gmail.com](mailto:clympingpc@gmail.com)

**Parish Council website**

<http://www.clymping.org.uk/>

# Wild About Clymping



*A swift flies over the Clymping fields, and a hedgehog has a snack off Horsemere Green Lane. Photos by Bola Akinola and Angela Ede, respectively.*

***Wendy Robinson introduces  
an inspiring new wildlife  
initiative in the village.***

Many of us have read about the plight of bees in the UK, the decline of flying insects, the loss of butterflies, the drop in hedgehog numbers and the loss of habitat for swifts, house martins and bats, and want to help.

We can't replace the lost habitats, but we can provide habitats for some species in our gardens and, crucially, we can link them together to create corridors

from one habitat to another.

The more habitats there are, the more opportunities wildlife have to expand territories, meet and breed, and adapt to climate change.

Over the past few years Clymping Parish Council have helped local wildlife by planting hundreds of spring bulbs, creating a wildflower meadow and providing





a bug hotel for pollinators on the green on Horsemere Green Lane, maintaining the pond opposite and supplying crab apple trees planted throughout the village for the Queen's Green Canopy.

Now, a new Parish Council initiative called 'Wild About Clymping' will present practical tips and creative ideas for residents to encourage wildlife habitats in our own gardens.

Wild About Clymping comprises a group of projects aimed at helping specific wildlife that live amongst us. The first two projects are 'Hedgehog Highway' and 'High Flyers'.

As part of the Hedgehog Highway project, we are distributing a separate leaflet with this newsletter that describes

ways to attract hedgehogs into your garden. Thank you to Clymping residents Sue Berry and Tony Ricards for being our hedgehog champions!

A mini-guide to our High Flyers project and information about the swifts, swallows and house martins it aims to help are included below.

We would also like to thank our multi-talented resident Matt Berry for designing the Wild About Clymping logo. We are excited to see how the village can come together in aid of our local wildlife.

*Wendy Robinson is part of Clymping Parish Council's Environment Work Group.*

Wild About Clymping

# Boxes for swifts, swallows and house martins

*Our High Flyers project welcomes these migratory birds to our village.*  
*By Wendy Robinson.*

Swifts, swallows and house martins are serious high flyers, soaring through our skies from March to October. Sadly, the population of these amazing birds in the UK has plummeted in recent years, due primarily to a lack of suitable places to nest. As traditional nesting sites, such as

tall old buildings with plenty of nooks and crannies under eaves and in roofs, become scarce, we can help by providing them with alternatives.

As part of the Parish Council's Wild About Clymping initiative, our High



Flyers project aims to install multiple nest boxes on suitable houses in our village. We asked Sussex Ornithological Society for advice, and approached some of our residents to see if they would like to offer their home as part of a pilot project.

Several homeowners agreed to take part, as well as St. Mary's School and Bailiffscourt Hotel. Specialised bird boxes are due to be installed at these properties at the end of March.

The boxes are being handmade locally, and some of the swift boxes will also have a 'caller' installed, which plays birdsong to attract swifts to the nesting boxes (this is said to be very effective). We would like to thank Sussex Ornithological Society for their generous support with this project.

Clymping is in a great location to help swifts, swallows and house martins, particularly as they have an increasing number of insects to feed on over the rewilding fields.

If you would like to give a home to a swift, swallow or house martin next year, please email me at [wendy@wendyrobison.co.uk](mailto:wendy@wendyrobison.co.uk).

In the meantime, you can provide food for these high-flying birds by making your garden a place where insects thrive. Pollinator-friendly plants will help, as will a log pile. You can also dig a pond (even a small one) – this is actually the best way to increase biodiversity in your garden, including flying insects.

## Wild About Clymping

# The lowdown on high flyers

*Can you tell your swift from your swallow or house martin? Here's what you need to know, from the Wildlife Trust.*

### Swifts

Swifts have been recorded flying at almost 70 miles per hour, which makes them the UK's fastest bird in level flight. They can fly 500 miles a day and do everything on the wing,

including eating, sleeping and mating. They only land when they're ready to nest. Swifts catch an incredible 300–1,000 flying insects in one go when feeding their young. If you see a bird at rest, then it is unlikely to be a swift; they are ungainly on the land and are much more comfortable in flight.

Swifts pair and breed for life. They share the parental duties equally, with the female laying two or three eggs in a season. This dedicated pair will re-use

the same nest year after year.

Swifts like to leave their nests by dropping into the air from the entrance. This is why they often choose to set up camp in the eaves of houses and other buildings, using materials they catch in flight to build their nests – including feathers and seeds. They'll then pack it all together using their own saliva.

Swifts have a very distinctive screaming call. Groups of swifts darting through the sky around their nesting areas are known as 'screaming parties'.

Swifts are a family, Apodidae, of highly aerial birds. They are superficially similar to swallows, but are not closely related.



BOLA AKINOLA

*Swift in the Clymping Gap*

### How to spot swifts

- Dark brown all over, often appearing black against the sky
- Larger than swallows and martins
- Long, curving wings
- Almost never seen perching
- Spotted April to August

### Swallows

Swallows, or barn swallows, are often found close to water in the countryside and can be seen in meadows and farmland. Although largely avoiding towns, they are known to use man-made structures like barns or garages to nest.

Like swifts and martins, swallows eat flies and aphids, which they catch in flight above either shallow water or the ground. To drink, they will skim low over rivers and lakes and scoop up water.



PAUL STEVENS

*Swallow in West Sussex*

We now know that they migrate all the way to South Africa on a dangerous journey that can take up to six weeks. Before migrating, and at night when on their journey, swallows will roost in reedbeds in huge flocks of hundreds of thousands of birds.

Swallows and martins are amongst the few birds that build their nests from mud. Swallows will collect wet mud and take it back and forth to build a nest structure of mud combined with grasses. The mud will dry and solidify to create a sturdy home that swallows will reuse year after year, carrying out maintenance with more mud.

When looking for a mate, female swallows will go for the male with the longest and most symmetrical tail, as this is a sign of good genes and health. Swallows also mate for life – although they are not completely monogamous!

You'll often see swallows gathering to perch on wires, clotheslines or antennas. You might also see them flying low to the ground over fields, especially near water, where they'll be feasting on insects.

## How to spot swallows

- Glossy, dark blue-black above and creamy white below, with a dark red forehead and throat
- Very long, deeply forked tail with 'streamers'
- Can be seen perching on wires
- Spotted March to October

## House martins

House martins can be seen across the whole of the UK, dashing between rooftops in towns and villages or near areas of farmland, woodland and water where insects are plentiful.

House martins belong to the same family – Hirundinidae – as swallows. Like swallows, house martins build mud nests. However, unlike swallows, they are a semi-colonial species, meaning they sometimes nest in groups, usually consist-

ing of around five nests. Unlike their more faithful cousins, house martin nests can contain chicks by multiple fathers.



PAUL STEVENS

*House martin adult with chicks in a nest that was handmade in West Sussex by Paul Stevens*

## How to spot house martins

- Glossy blue-black above but with a bright white rump
- Short, forked tail
- Spotted March to October



Ring **01243 696740** to book  
a free measure and no obligation quotation

Carpet • Vinyl  
Designer Vinyl • Rugs

**10% off any flooring**  
**£5.00 off any rug**

*Free loan of samples from our showroom  
Michelle and Tony look forward to welcoming you*

**Free Measuring, Estimating  
& Fitting\*** (T&Cs apply)

**NEW 'AT HOME' SERVICE**

*Give us a clue and we'll bring a selection to you*

236 Chichester Road, Bognor, PO21 5BA  
email: [coastalcarpetsbognor.co.uk](mailto:coastalcarpetsbognor.co.uk)

\*Free fitting on carpets over 15m<sup>2</sup>



An award-winning Chartered Building Company that has worked in the Sussex area since 1985, gaining a well-deserved reputation for professionalism, reliability, high quality craftsmanship & project management skills.

Experienced in all types of building projects, from large commercial to the sensitive renovation of listed buildings, bespoke new-builds or extensions & refurbishments.

Telephone 01243 542056  
Email [martin@msbc.uk](mailto:martin@msbc.uk)  
[www.msbc.uk.com](http://www.msbc.uk.com)



# Invasive species

## A threat to bees

*Keeping a lookout for the Asian hornet can help protect the UK's bee population.*

*By Lisa Eyre*

Local beekeeper Shahnaz Schaeper would like to ask Clymping residents to be vigilant to the possible presence of Asian hornets in our area.

Asian hornets (*Vespa velutina*) are an invasive species that pose a significant threat to the UK bee population. They are a highly aggressive predator of honeybees and other native pollinators.



JEAN HAXAIRE

*Asian hornet*

The insect is native to Asia but was introduced to France accidentally in 2004. Since then it has spread to neighbouring countries, and a number of sightings in England have been reported since 2016. Although there haven't yet been any reports of the Asian hornet in West Sussex, it has been spotted in surrounding counties.

Asian hornets are active from April to November, with a peak in August and September. They may be seen on flowering

plants, around beehives and around rotting or fermenting fruit. They make large nests in tall trees and may also nest in garages and sheds.

Asian hornets are slightly smaller than European hornets and have distinctive markings, including an entirely black or dark brown thorax.

They have yellow bands separating the segments of their abdomen, but only the



JEAN HAXAIRE

*An Asian hornet 'hawking' for honeybee prey*

fourth segment is yellow-orange; the rest are black. Their legs are brown with yellow ends, and their head is black with an orange-yellow face.

If you spot an Asian hornet or nest, it is important to report it to the GB Non-Native Species Secretariat. Details of how to make a report can be found at <https://www.nonnativespecies.org> (click on 'Species alerts' and then on 'Asian hornet'). Here you will also find helpful resources such as a fact sheet and ID sheets.

Asian hornets sting, so keep your distance from them and never disturb an active nest.

*Written using information from GB Non-Native Species Secretariat.*



## Profile

# Meet Team GB boccia athlete Matt Berry

.....



*Matt Berry prepares to propel a ball at the 2023 UK Championships*

### *Sue Berry introduces us to Clymping's own UK Champion boccia player.*

Clymping resident Matt Berry was 11 years old when he started playing boccia, a disability sport similar to bowls. Since then he has excelled as an athlete. Now aged 28, he is the current Boccia BC3 English National Champion and UK

Champion, and he has been selected to represent Team GB in international competitions later this year.

Matt has the life-limiting condition Duchenne muscular dystrophy. As he is unable to throw the balls, he uses an 'assistive device', in other words a ramp, to propel the ball onto the court. He has an assistant with him who moves the ramp to where he needs it to point. Then, using a head-pointer which he designed himself,



*To take his shots, Matt uses a moveable ramp and a head-pointer which he designed himself.*



*Matt with his mother, Sue Berry, at the 2023 World Challenger competition in Poland. Matt represented Team GB and earned a world ranking.*

Matt releases the ball from the ramp.

Matt was introduced to boccia by his sports teacher, Steve Richards, at the Angmering School. Over the next five years, Matt competed in national competitions individually, and as the captain of the school team.

His first break came in 2014 when he was selected for the two-year Boccia England Talent Pathway programme. This involved Matt travelling to regular training camps in Nottingham.

However, only one year into this programme, Matt's talent was exceeding all expectations, and he was moved up to what was then called the England 'B' squad, known as the Lions.

Once in the Lions, Matt was eligible to play internationally. In 2016, he won his first cap for England, competing in Russia, where he won a bronze medal.

Shortly after this, Matt was promoted to the England 'A' team, where he would train with the best boccia players in England, and his boccia career really took off.

Over the years, Matt has won numerous trophies and gold and silver medals at the domestic and international level as an individual, in a pair and as part of a team. Highlights include Matt winning gold in Slovakia in 2017 by beating the 2020 Paralympic champion in the final; winning silver at the 2019 UK Championships; and, in 2022, gold at the UK Challenger and gold at the National Finals.

With such an incredible history of talent and achievement, it wasn't a total surprise when Team GB expressed an interest in Matt and, last year, he was recruited into Boccia UK to be part of their new Talent Transition Squad. Matt now trains regularly with the GB Team at their designated train-

ing facilities in Scotland and Loughborough. He also trains at Clymping Church Hall.

Last August, Matt represented Team GB for the first time at a World Challenger in Poland, where he won the silver medal, narrowly losing 4–3 in the final to the world-ranked number eight from Hong Kong. He thus cemented his place in Team GB and earned a world ranking of 30.

This year Matt has been selected to represent Team GB in international competitions in Finland, Italy and Poland, with other international opportunities on the horizon.

Away from boccia, Matt uses his engineering degree to work as a freelance design consultant and is involved with charity events and promotional work for the Duchenne Family Support Group.

## Ukraine

# Providing help and hope

*James Baird thanks everyone for their donations and encourages us to keep supporting Ukrainians.*  
*By Lisa Eyre*

Clymping resident James Baird, who has now made five trips to deliver pickups full of supplies to soldiers and civilians in Ukraine, would like to thank everyone in our local area who has contributed to these relief efforts. Your donations of clothing, food, medical supplies, battery chargers and other goods and equipment have brought not just relief to their recipients but also a sense of hope. James is full of stories of their gratitude.

In February he helped deliver two pickups to a unit fighting near Avdiivka. The wife of one of the soldiers had organised a

crowdfunding campaign to buy one of the pickups. James says that when he arrived, her husband told him that the only vehicle that they had had been shelled by Russians and had no windows. “These vehicles, along with the donations from people such those in our community, lift their spirits”, James says. “The people of Clymping have reached out with their generosity and have touched those ordinary people who are fighting to protect their country and their families.”

James has also delivered our donations to civilians living in a burnt-down town and to humanitarian charities who distribute the aid to where it is most needed.

Before each trip, James normally posts requests for donations on the Clymping Village Residents Facebook group, so please keep an eye out and give when you can.

## Art trail

# Open Studios allows local artists to shine

*Susie Olford invites you to visit artists on this year's trail to see their work and enjoy a chat.*

The annual Chichester Open Studios Trail features local artists exhibiting their work for the public to enjoy. Many of the venues are close to Clymping,



*Clymping's Breach by Susie Olford (acrylic on board; 60cm square)*

with friendly artists giving you time to experience their work and enquire about the provenance of each piece.

The trail will be held slightly later this year, with

studios open 18th–19th May and 25th–27th May 2024.

As usual, I will exhibit my oil and acrylic paintings at Hoe Lane, Flansham, in a wonderful light-filled barn (Studio 71, PO22 8NJ). There is easy courtyard parking and wheelchair access, and you

will have plenty of space to walk around colourful and contemporary work. My collection features vibrant seascapes, as well as some landscapes, with expressionist ideas on these themes. My paintings are available framed and unframed, varying in size from 60cm (24") square to 15cm (6"). I'll also have my humorous wine-related greeting cards, popular with wine-loving friends and family.

Moving on, in Bilsham (on Bilsham Road) you could visit Gill Hunter Nudds, with her delightful hand-built ceramics depicting animal wildlife such as hares and foxes. Many are for indoor display, and some are suitable for outdoors in your garden.

In Felpham village you will find Marion Whitcomb (The Grove), Hilary Frame (Manor Close) and Peter Hutton (Ashmere Lane), all artists who



*The Hare by Gill Hunter Nudds (hand-built ceramic)*

have exhibited in this Studio Trail before. Their work varies from pen and ink to acrylic, watercolour and pastels. Some of you may be familiar with Peter's fascinating technical drawings of older vehicles and Sussex buildings. It's always an interesting stop at Peter's.

New to the Trail in Felpham is Nick Crimmen (Outerwyke Road), who is an animator, illustrator and cartoonist. He creates eye-catching, conversation-starting images that will amaze you and make you smile. No one else on the Trail has work like Nick's.

Nick has greeting cards featuring his original work, as do most of the other artists.



*The Last Nut by Nick Crimmen (pen/ markers on paper; A4)*

Studios will be open 10:30am–5pm. You can find full details of the artists, maps and more on the Open Studios Trail website: [www.chichesteropenstudios.org](http://www.chichesteropenstudios.org). Full-colour brochures will be available in late April.

*Susie Olford (smoart@btinternet.com) is a Clymping resident and a member of Arundel Art Society, who meet in Clymping Church Hall.*

## Dee West Yoga

My intermediate yoga class meets at Clymping Village Hall on Saturdays, 9:00–10:00am. Each session is £10 (drop-in).

There are many good reasons to practise yoga: it is simple to learn, it's safe, it gives you energy, it improves your flexibility, and it improves focus and balance.

I hold a YA200hr Yoga Diploma and am fully insured.

For more information, please contact me on 07816 460992.





# BEACH REPORT

*The Environment Agency provides an update on the beach.*

## Shingle recycling

Working with Littlehampton Harbour Board, the Environment Agency and local landowners have completed shingle recycling on Clymping beach this winter. As there were challenges with large vehicles accessing the land next to Bread Lane by road, we explored bringing shingle onto site along the beach.

The Environment Agency got permission from Natural England to travel along the foreshore with dumper

trucks for a short time in December to complete this work. This activity is usually restricted in winter due to the impacts to over-wintering birds. We agreed specific conditions with Natural England to make sure there would be minimal disturbance to birds feeding on the beach.

Changes to the beach made ground conditions soft, so we used shingle to create a ramp for safe access to the working area. A prevailing southerly wind also limited our working window, as it pushed the water levels up higher than normal. Due to these conditions, we did not bring in as much shingle as we had hoped during this period. We have focused on moving the shingle on site into a more substantial bund.

We have completed topographic surveys of the beach over the past year to monitor how the shingle moved and to help us plan for future works. The most recent survey was completed on a snowy day in early January. The survey (see page opposite) shows how shingle has been pushed into an overlapping bund by Bread Lane. We can also see how the shingle bund in the western car park has increased in size and been pushed into a more landward position. Further work has been completed since the survey was done.



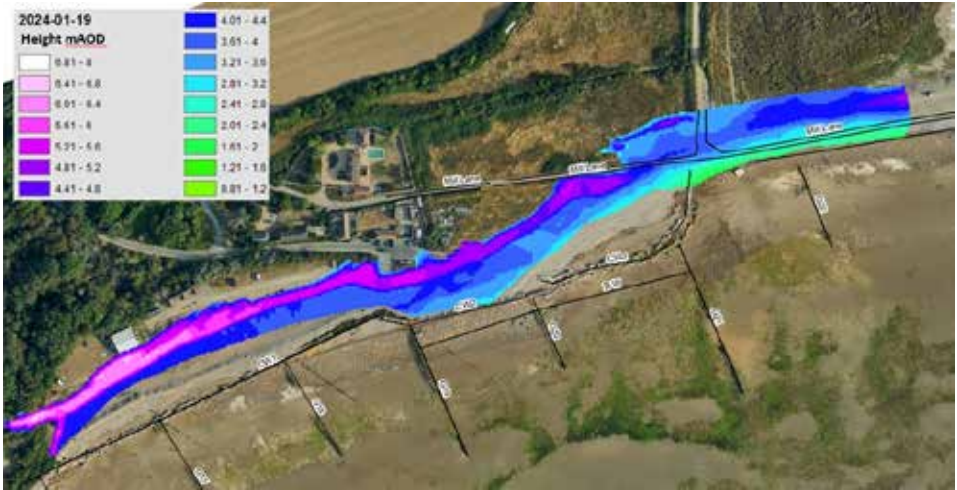
*Environment Agency excavator moving shingle by Bread Lane*



*Rocky habitat on the beach*

## Rocky habitat

The rock and concrete debris on the beach to the west of the car park is evolving into a rocky habitat. The rough surface of the



Results of January topographic survey showing the shingle bund – high points are white/purple, lower spots are green



Shingle bund in western car park during the February spring tides

be removing dangerous timbers and materials on the beach which are posing a hazard to beach users. We will be completing a survey of the beach in the next few weeks to determine the scope of these works.

rocks lends itself to the habitat developing, with evidence of bladder wrack (brown seaweed) and barnacles growing. It is possible that this area is visited by various sea creatures on high tides and is likely that intertidal habitat may start to develop on other features found on the beach.

### Summer public safety works

We have been successful in receiving additional funding this summer to complete public safety works on the beach. Over a couple of months we will

### Flood risk

For the most up-to-date information of flooding, please go to our website: <https://flood-warning-information.service.gov.uk/warnings>. To sign up to receive free Flood Warnings please call Floodline on 0345 988 1188.

### Contact

Please get in touch if you wish to discuss Clymping beach or the Environment Agency's planned works. Email us at [SSDENquiries@environment-agency.gov.uk](mailto:SSDENquiries@environment-agency.gov.uk).

## Renga. January 2024

by Lin Lundie

After the last flood we must clear our home  
we go to an antique fair in Epsom  
between two more storms

I sell three things

1. my grandmother's garden hat  
of black crinoline straw  
trimmed with pink silk crushed roses
  2. a handful of old french violets in purple velvet  
to a Japanese man
  3. one large organdie full blown rose made by my  
friend Doris
- this pays the rent

the hall is cold and full of elderly residents  
of Epsom who want a walk but not out in the  
rain and wind . . . and someone to talk to

I wave to a small boy in a pushchair  
am rewarded with a big smile and dimples  
he has no idea he is the most beautiful thing  
in this roomful of precious objects

lithe and tall oriental man dressed in black  
tries on a 1950s Harris tweed jacket  
looks sensational . . . very pleased to give me  
£25 . . .

home . . . pack up early before storm no. nine arrives  
come through low cloud over long furlong and mist  
over wild heart hill which lifts by the sea

our house is cold and damp . . . these are sad times  
as we let go of a lifetime of memories and smile as we do.

# SCHOOL NEWS



*Justin Murray, head teacher, describes exciting educational adventures at St Mary's School.*

Over the past few weeks, students at St Mary's Clymping CE Primary School have embarked on a series of thrilling educational adventures, enriching their learning experiences beyond the confines of the classroom. Our hope and vision is to make memories that last a lifetime. We want them to be remembering these experiences when they are adults and retelling them with joy and enthusiasm.

Our talented choir had the incredible opportunity to showcase their vocal talents at the prestigious Young Voices concert held at the O2 Arena in London. With voices raised in harmony, our students delivered a breathtaking performance alongside 8,000 other children, leaving the audience in awe and earning well-deserved applause. We are excited for more participation at this event in 2025.

Meanwhile, students in Years 5 and 6 delved into the wonders of nature during their visit to Arundel Wetland Centre. Guided by expert naturalists, they observed fascinating bird species, marveled at the diversity of plant life, and gained a deeper appreciation for the importance of wetland ecosystems in supporting biodiversity.

Our Reception class also had the chance to connect with nature during their own visit to the Wetland Centre. Guided by their teachers, they embarked on a nature walk, spotting wildlife, exploring pond life, and engaging in sensory experiences that ignited their curiosity about the natural world.

In an effort to instill a sense of environmental responsibility, our Year 3 and 4 students visited the Ford Recycling Centre in February to learn about waste management and recycling practices. While not

the most fragrant experience, it was certainly informative and has inspired some thoughtful poetry.

Year 3 and 4 students also had the privilege of stepping back in time at the Mary Rose Museum, where they explored the history of maritime archaeology and discovered the story



*Mr Murray points to an interesting feature at the beach. Falling snow made January's beach walk extra memorable!*

of Henry VIII's famous warship. This experience is something that can bring abstract concepts such as chronology into young children's realm of understanding.

Year 1 students were treated to an out-of-this-world experience as they welcomed a mysterious visitor from another planet. Through drama and other activities, they embarked on an intergalactic journey, exploring themes of friendship, empathy and cultural diversity while sharpening their questioning skills.

To deepen their understanding of geography, Year 1 and 2 students also had the privilege of learning from a seasoned airline pilot who visited their classroom. He shared first-hand insights into aviation and navigation. Through interactive discussions and hands-on activities, the children

explored concepts of maps, directions, and spatial awareness.

Perhaps my own most memorable experience this half term was taking the whole school to Clymping beach on the day it snowed in January. This was exhilarating, breathtakingly beautiful and something that I know will remain in my memory bank for a long time to come. The children's excitement was contagious, and it was truly a remarkable experience.

Our school is now buzzing with excitement as we prepare to celebrate the enchanting world of books during our upcoming Book Week in March. With a focus on oral storytelling and drama, we aim to ignite a passion for reading while nurturing communication skills and fostering creativity in our students. >>

## Choir Performance at the O2 Arena

As part of the St Mary's school choir, I had a wonderful experience performing with Young Voices at the O2 Arena in London. We had been practicing for ages and, finally, on 30th January, the moment came.

When we got to the O2 it was a bit nerve-wracking but it was fun. After searching for our seats, we started to relax a bit. We practised for quite a while and everybody was so tired after. We immediately shot up with energy when we actually started the



*Singing with a choir of 8,000 children*

performance. It was a really cool time with my friends. In the performance it seemed like we were part of a live

light show with our torches. The whole crowd took part in a Mexican wave; it was amazing to watch the whole arena. I enjoyed seeing the children and parents do this together.

This is something I will remember for my whole life as it was a once-in-a-lifetime opportunity that I won't get to do ever again.

*– Emily, Year 6*



Kicking off the week on Monday, we will invite all students to bring in their favourite book to share. Tuesday promises to be full of laughter and intrigue with our 'Would I Lie to You' activity, when students will bring an object from home and spin imaginative tales about its origins. On Wednesday, we'll be delving into the world of flash fiction with our young writers, when students will have the opportunity to craft their own mini stories or sentences, depending on their age. As Thursday rolls around, we'll be ready for our grand finale

celebration, coinciding with World Book Day. Students will dress up as their favorite book characters and participate in a thrilling inter-house drama competition led by our Year 5 and 6 students.

We're also holding a schoolwide book donation drive and sale as part of our celebrations. The funds we raise will go towards improving our school library.

Our school calendar is as action-packed as always, and we are passionate about continuing to provide opportunity for all of our young people to flourish.

## Getting excited about sport at St Mary's by Stephen Day, Deputy Head Teacher

Our aim at St Mary's is for all our pupils to be engaged in healthy, active lifestyles. We are on a journey of improvement in PE and sport, and I am really excited to share some of the changes and successes with you.

For the past few years, the government has provided top-up funding to support the development of PE and sport in schools. One of the key areas we have been focusing our funding on at St Mary's is extra-curricular participation. For example, in the summer term last year we invested our time and energy heavily into cricket and rounders, in the hopes of getting more children involved and feeling confident in sport.

With cricket we focused in particular on our children in Years 5–6, and they were really keen. We have also partnered with Sussex Cricket and

attended many of their regional tournaments last spring, taking teams from Year 2 onwards.

It is vital that pupils feel prepared when they attend inter-school events, so at school we purchased age-appropriate equipment for both cricket and rounders and developed practice areas on our school field.

Investing our extra funding into these areas, as well as the commitment from staff to take pupils to inter-school events, improved the pupils' engagement in sport, with many of them desperate to join in. This in turn created a richer competitive environment in afterschool clubs and drove up performance levels.

A particular highlight last year was when our Year 5 and 6 rounders team won the area tournament at Littlehampton Academy. This was the >>

first area tournament in any sport the school had won in over five years. The victory sent the team through to the regional finals, where they came second, losing by just half a rounder. This success was celebrated back at school and has helped to kickstart the motivation of all pupils in PE and sport.

In addition to our efforts in extra-curricular sports, over the summer we decided to change the way PE is taught at St Mary's. Instead of relying on external coaches for the core lessons, we brought these back 'in-house', supported by a package of training for staff.

In September we wanted to create a spark of enthusiasm to carry across the feeling of sports success from the summer term. So, we organised for a professional female footballer, Chloe

Peplow, to come to our school and present an assembly. She was amazing! She discussed her journey, answered every question under the sun, signed pupils' goalkeeping gloves and got everyone working hard during a fitness session. There was a real buzz following that assembly and many of our pupils enthusiastically participated in a range of football tournaments this past autumn.

Since January we have taken successful teams to an inter-school indoor athletics meet, a separate cross-country event and, most recently, the first cricket tournament of the year. It's great to see our children excited about both PE and sport, and we look forward to seeing more eager participation – and success – this spring and summer.

## DISTRICT COUNCILLOR



*Amanda Worne reports on Arun District Council's first Flood Forum meeting.*

On Monday, 26th February, I attended the first Flood Forum meeting set up by Arun District Council. This forum has been created to bring together organisations and local authorities that have a responsibility to help deal with the flooding issues that we have been facing of late, and that potentially are only going to worsen due to climate change and an increase in

the number of houses. West Sussex County Council, Southern Water, the Environment Agency and representatives from local parish councils were in attendance.

This first meeting focused on a very informative presentation from Southern Water and their PR24 business plan, which promises to deliver a significant increase in investment to meet their long- and

short-term challenges. The budget for this plan, which covers 2025–2030, is three-and-a-half times larger than any plan they have produced before. The plan highlights the need to reduce how much Southern Water use storm overflows (which release sewage into rivers and the sea), in order to protect marine wildlife and bathing waters. It also highlights the need to reduce serious pollution incidents to zero, and to improve Southern Water's pollution performance, amongst other changes they intend to make.

Some of the challenges faced by Southern Water are the fact that our district is

densely populated, with unique water environments. Our area is becoming increasingly challenging as our climate changes and our population grows, as this increases water usage and the production of wastewater.

It was a very interesting meeting and offered an brilliant opportunity for questions highlighting local concerns and issues, and enough time for in-depth answers to be given.

*Amanda Worne is an Arun District Councillor for Yapton, Ford and Clymping.  
tel: 07955 723232  
email: cllr.amanda.worne@arun.gov.uk*

## COUNTY COUNCILLOR



### *In touch with Jacky Pendleton, West Sussex County Councillor.*

I've been working hard to address the issues which we've all been facing in relation to water over the past few months. There is, of course, the very real issue of coastal erosion on Clymping beach, and I've regularly been in touch with the residents who have been dramatically affected by incursion of the sea, whilst working with the Environment Agency (EA) to shore up that incursion. I believe it's unacceptable that so little funding is available from the EA to protect our residents and their properties, and to ensure our land is protected. I'm actively encouraging our Members of Parliament to represent the view that increased funding to create greater protection is essential.

In addition to sea incursion, I'm working with Clymping Parish Council to apply to West Sussex County Council (WSCC) for a Watershed Grant to help with surface water flooding issues in both the Atherington area, with clearance of surface water drainage ditches, and on Horsemere Green Lane in relation to the pond as an attenuation facility which needs to be made more effective in aiding surface water drainage.

I'm also actively demanding of Southern Water that our foul drainage systems are upgraded to fit modern-day needs.

West Sussex County Council Highways are working hard to respond to all

reports of potholes and road damage in our area. They've purchased a piece of machinery which can clear, prepare and fill potholes in a one-process approach, ensuring the infill is sealed against our weather vagaries. There will, of course, always still be a need for a more manual approach to repairing difficultly placed potholes, and this work will continue as normal. However, the introduction of a more efficient jet patching machine will certainly help to speed up some repairs. Yes, our roads could be better, but with an increase of some 30 per cent in road traffic use over the last ten years, it's very difficult to keep pace in repairing around 4,000 kilometres of West Sussex roads. An additional £2 million in the Highways budget for next year will help to make an estimated 42,000 safety repairs on our roads each year.

Ninety-six per cent of our road repairs are completed within the target 28-day period – so given that there has been a 20 per cent drop over the last year in road defect reports from residents, the important action for you all is to report the defects using the WSCC website or by phone. Engaging technology to help the equation has to be the way forward.

It's important to note that, in the light of tightening budgets and restricted funding, WSCC, in their budget for the year to come, has managed to maintain all current services with no cuts planned at all. The call on local funding in relation to children's services and adult social care

has increased exponentially and is still increasing month on month. It's good news that the government have recently allotted some £6.88 million for adult social care, our share of which will help improve services, as will an initiative to encourage kinship fostering for vulnerable children. Additional funding has also been given to support the school transport budget and to support increased bus services in our area through our two providers, Stagecoach and Metrobus.

Protecting our environment is a vital activity which WSCC are focusing on.

We've broadened our approach from the normal climate change strapline to the more inclusive approach of 'protecting our environment'. This will improve our efforts in relation to biodiversity, sustainability, electric charging points, wildlife

and sea and river protection, all of which are environmental factors which affect you all.

Please do get in touch with me if you would like to talk about local issues that I can help with. I'm optimistic that our weather is beginning to improve, so I would urge you all to get out and enjoy the nicer weather. I wish you a healthier and more active way of life over the coming months.

*Jacky Pendleton is West Sussex County Councillor for Clymping, Elmer, Ford, Middleton-on-Sea and Yapton.  
tel: 07768 200539  
email: [Jacky.pendleton@westsussex.gov.uk](mailto:Jacky.pendleton@westsussex.gov.uk)*

“ *Highways have purchased a piece of machinery which can clear, prepare and fill potholes in a one-process approach* ”

# PLANNING APPLICATIONS

*The following planning applications for Clymping are undecided by Arun District Council as of 27th February 2024.*

Arun DC ref.	Location	Proposal
CM/4/24/A	The Oystercatcher Yapton Road Climping BN17 5RU	Various illuminated and non illuminated advertisements on various locations.
CM/3/24/DOC	Bramleys Horsemere Green Lane Climping BN17 5QZ	Approval of details reserved by condition imposed under CM/24/23/Pl

To find out about current planning applications made to Arun District Council, visit [www.arun.gov.uk/planning-application-search](http://www.arun.gov.uk/planning-application-search) (select the parish from the drop-down box, tick the ‘undecided’ box and click on search).

## Development

# New homes coming

*Foreman Homes describe the new development to be built on the field west of Church Lane.*

The team at Foreman Homes and Vivid are delighted to announce that we have been granted reserved matters approval for the development of

300 new dwellings over approximately 21 hectares to the west of Church Lane, Clymping.  
After listening to feedback from the community and working closely with the Parish Council and planning officers, our development has been carefully designed to be a beneficial addition to the area for both new and existing homeowners. >>



It will include 300 new dwellings for the area – ranging from apartments to various size family homes plus affordable housing to meet the local need. The development is set to deliver an extensive planting and landscaping scheme which includes new tree, shrub and hedge planting, as well as retaining a large portion of the existing tree belt. All of which is aimed at preserving a rural feel to the area.

Additionally, we are set to provide improvements to the existing road network with the realignment of Church Lane and the provision of an enhanced roundabout. The planning permission also includes the creation of new community facility buildings for which we will

agree a marketing strategy with the local authority and aim to find occupiers for these buildings that will benefit the entire community.

Our developments are designed to be places where communities can grow throughout the years, so there will be multiple play spaces that will range from trim-trails up to fully equipped areas of play. We have also increased the size of the village green to maximise the recreational space within the site and reintroduced the fitness trail as previously requested.

With something for all ages, it will be a development for everyone from first time buyers to growing families looking for their forever home.



*Layout of the planned Foreman Homes development*

## Community space

# The Church Hall welcomes you

*Robin Keeling outlines the features of the Church Hall and describes the varied activities that are held there.*

Clymping Church Hall is ideal for group activities, clubs and parties. The main hall, which is 30 metres square, is light and airy and easily accessible. We have 90 comfortable chairs and ample tables. There is also a committee room and a well-fitted modern kitchen. We have plenty of parking space and a large open grassy area suitable for recreational activities.

The Church Hall was opened in 1991 but sometimes people aren't aware it exists because it is tucked away to the north of St Mary's Church, on a side road, hidden by trees and bushes. It is opposite the main entrance to the Rudford Industrial Estate on Church Lane.



*Church Hall exterior*

Arts Society, Arundel Pilates, a yoga group run by Clare Nicholas, Arun East U3A, which hold weekly bridge sessions, and a home group. Clymping Parish Council use our hall for their meetings, and Arun District Council use it for elections.

It is also very suitable for family parties, activities and gatherings, and other group activities and one-off events.



*Main hall*

We have our own AED within the building and we are up to date with the required safety checks and risk assessment.

The hall is independently run on a voluntary basis and is a registered charitable company with five trustees.

If you are looking for a one-off activity space or to use our hall on a regular basis, please contact Chris Keeling, who is a trustee as well as our booking secretary, on [chrismkeeling@btinternet.com](mailto:chrismkeeling@btinternet.com), or phone 012435 85584.

*Robin Keeling serves as a trustee and treasurer of Clymping Church Hall.*

# Word search

## Going down the pub

By *Alexander Nonymouse*

Can you find 16 pub-related words in the puzzle below? They go horizontally and vertically and might make you hungry and/or thirsty.

L L H Q N O P B F A R Q K K Y  
D W M B B T J R C O A C S H O  
I S N A C K S J G F E L T M I  
N A O R J B L A C K H O R S E  
I D P Y Y O T T Y L U S B A M  
N R E S T A U R A N T I E N E  
G O N C O S Y U K W I N E H K  
T A F I L P V H I Z G G R R Y  
D S I K C I W Y T A H T H S D  
T T R B T R V R C B V I G J D  
T P E M Q I E L H T U M E N U  
G I Y X H T F X E S E E J D J  
B N W Q L S N Z N A R A A R X  
W T K U U P T L N S W Q G C A  
Z O Y S T E R C A T C H E R T

- |               |         |              |         |
|---------------|---------|--------------|---------|
| RESTAURANT    | BEER    | CLOSING TIME | ROAST   |
| BAR           | WINE    | COSY         | MENU    |
| OYSTERCATCHER | SPIRITS | OPENFIRE     | KITCHEN |
| BLACK HORSE   | DINING  | SNACKS       | PINT    |

# Two mobility scooters for sale in Climping

**Call Alison Baird 07973 250055**

Full history and owner's manuals, manufacturer's warranty available.

Both hardly used. Owner sadly passed away 20th December 2023.



## **Rascal Rio Powerchair**

used in the house and outside once –  
purchased new from Clearwell Mobility,  
Chichester in April 2023 – cost £1279

All reasonable offers considered – available  
to view and try out on site by appointment



## **Ranger 2.0 MV600**

used 4 times in the garden – purchased  
new from Clearwell Mobility, Chichester  
in June 2023 – cost £4,199.

All reasonable offers considered – available  
to view and try out on site by appointment



## *Come give us a try!*

We are a friendly local café offering all-day  
breakfast plus a range of sandwiches, baps and  
other delicious meals to fill you for the day.

✦ Opening hours: ✦

8am–3pm Monday–Friday

We also deliver on Thursdays and  
Fridays! 01903 718143

Unit S7 Rudford Industrial Estate, Ford



The Spitfire Cafe

Need a venue for a small business function on a  
weekday evening or weekend? Give us a ring.





# Fiona Howard

WALLPAPERS

15%  
OFF



## Just for you!

15% off our wallpapers for readers of Clymping Village news this Spring. Use code HAPPYCLYMPERS until 31st April.

[www.fionahoward.com](http://www.fionahoward.com)