

# Rampion 2 Newsletter

September 2025



## Rampion 2 approved by Government

On 4th April 2025, the Rampion 2 Team were delighted to be awarded consent for the Rampion 2 Wind Farm from the Secretary of State for Energy Security and Net Zero, the Rt Hon Ed Miliband MP.

This key milestone for the project means Rampion 2 is now set to play an important role in securing the UK's energy supplies from our abundant wind resource.

The decision followed a 6-month thorough examination of the Rampion 2 proposals which included a series of Public Hearings and an Open Floor Hearing, to enable all statutory organisations and interested parties to explore a range of key issues.



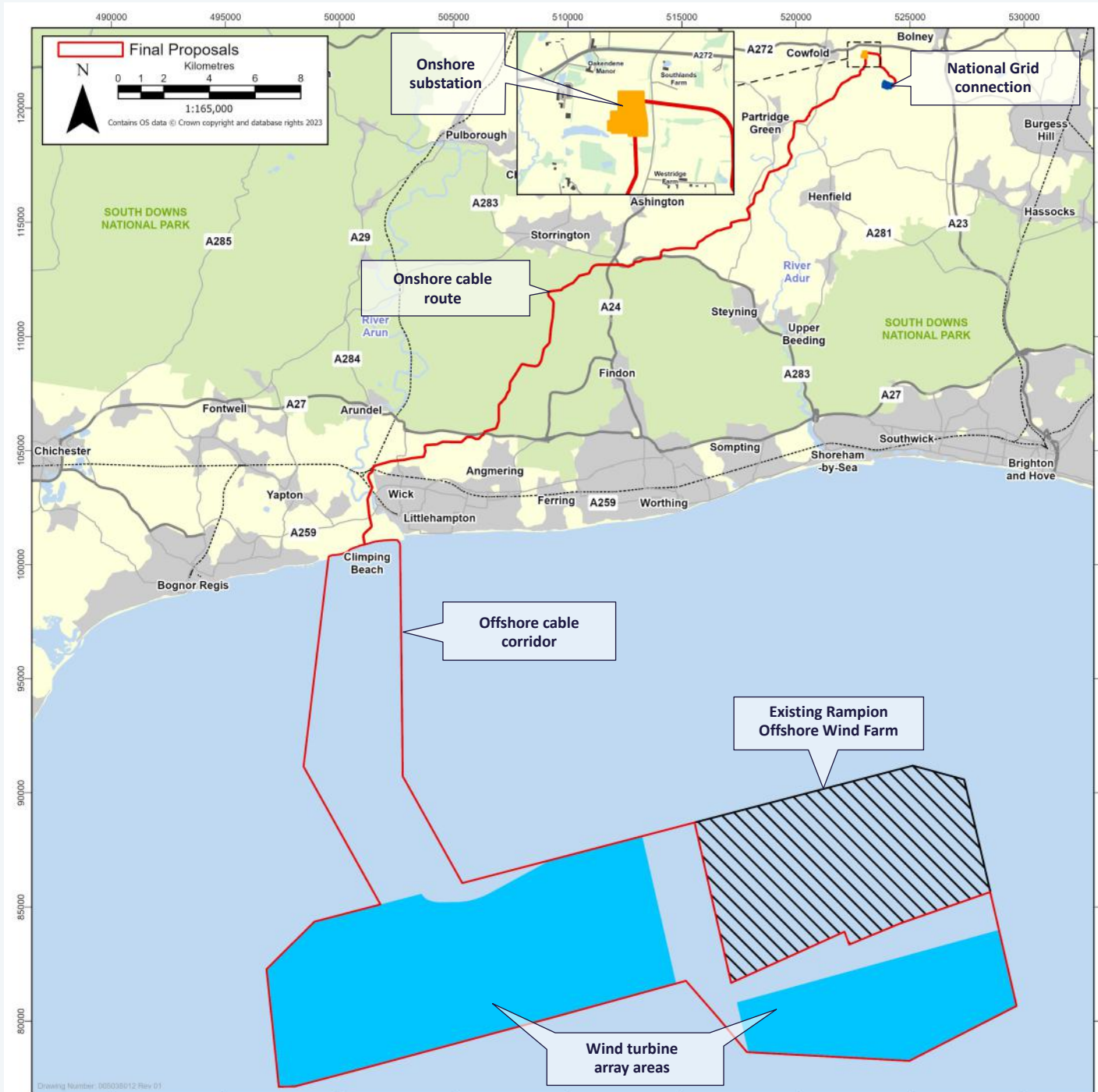
☺

*We would like to take this opportunity to thank the Sussex community for their input over the past four years, helping us refine and adapt the proposals to create the best possible project for this site, for the community and the environment. I would also like to pay special thanks to our committed project team and consultants who have worked tirelessly to bring Rampion 2 a significant step closer to reality.*

☺

— Karen Algate, Senior Consent Manager for Rampion 2

DCO Examination Hearings in the Double Tree  
by Hilton Brighton Metropole



## Rampion 2's Development Consent Order permits:

### Offshore

- up to 90 wind turbines and foundations 13-26km off the Sussex coast
- maximum turbine height of 325m to blade tip
- a maximum turbine array area of 160km<sup>2</sup>
- up to 3 offshore substations
- subsea cables to bring the power to shore under Climping Beach

### Onshore

- a 38.8km underground onshore cable route
- 27 trenchless crossings reducing disruption to roads, railways and rivers
- a new substation at Oakendene near Cowfold
- final grid connection into the transmission network at Bolney, Mid Sussex



# Sussex MPs visit Rampion Wind Farm

On 18th July, the Rampion 2 team hosted a group of Sussex MPs, newly-elected in 2024, on a visit to the Rampion Wind Farm.

They transited to site from the Operations Base in Newhaven on board a crew transfer vessel, to learn more about how the offshore wind farm works and hear about the future Rampion 2 project. They sailed around the wind farm and saw a turbine up close to experience the sheer power of the wind.

Alison Bennett MP for Mid Sussex, Alison Griffiths MP for Bognor Regis & Littlehampton, Dr Becky Cooper MP for Worthing West, James MacCleary MP for Lewes, Jess Brown-Fuller MP for Chichester, John Milne MP for Horsham and Tom Rutland MP for East Worthing & Shoreham donned safety equipment and headed out to the Rampion Wind Farm, eight miles offshore, on a bright day with calm seas.

*Offshore wind energy offers this country huge opportunities to move away from fossil fuels and lower electricity bills, so I really valued being able to learn more by visiting Rampion 1 and discussing the significant increase in capacity that Rampion 2 will bring.*

— Alison Bennett MP (Mid Sussex)



Left to right: Chris Tomlinson & Fruzsina Kemenes (Rampion 2), Alison Bennett MP, John Milne MP, Alison Griffiths MP, James MacCleary MP

*As a Newhaven resident, I often see the Rampion vessels coming and going – so it was fascinating to get a better understanding of what happens offshore and all the work involved in keeping the lights on. The scale of the operation and the expertise of the team were hugely impressive. Offshore wind is vital to tackling the climate emergency – but it's also a real opportunity for communities like ours, bringing jobs, investment and skills to the South Coast.*

— James MacCleary MP (Lewes)



Left to right: Vicky Portwain (Rampion 2), Becky Cooper MP, Jess Brown-Fuller MP, Tom Rutland MP & Chris Tomlinson (Rampion 2)

*Rampion 1 has been a huge success and it's great to see Worthing being part of the green energy transition and much-needed reduction in use of fossil fuels. I'll be working with Rampion to make sure that our precious Sussex Bay environment and our coastal community remain central to the conversation as we look ahead to Rampion 2.*

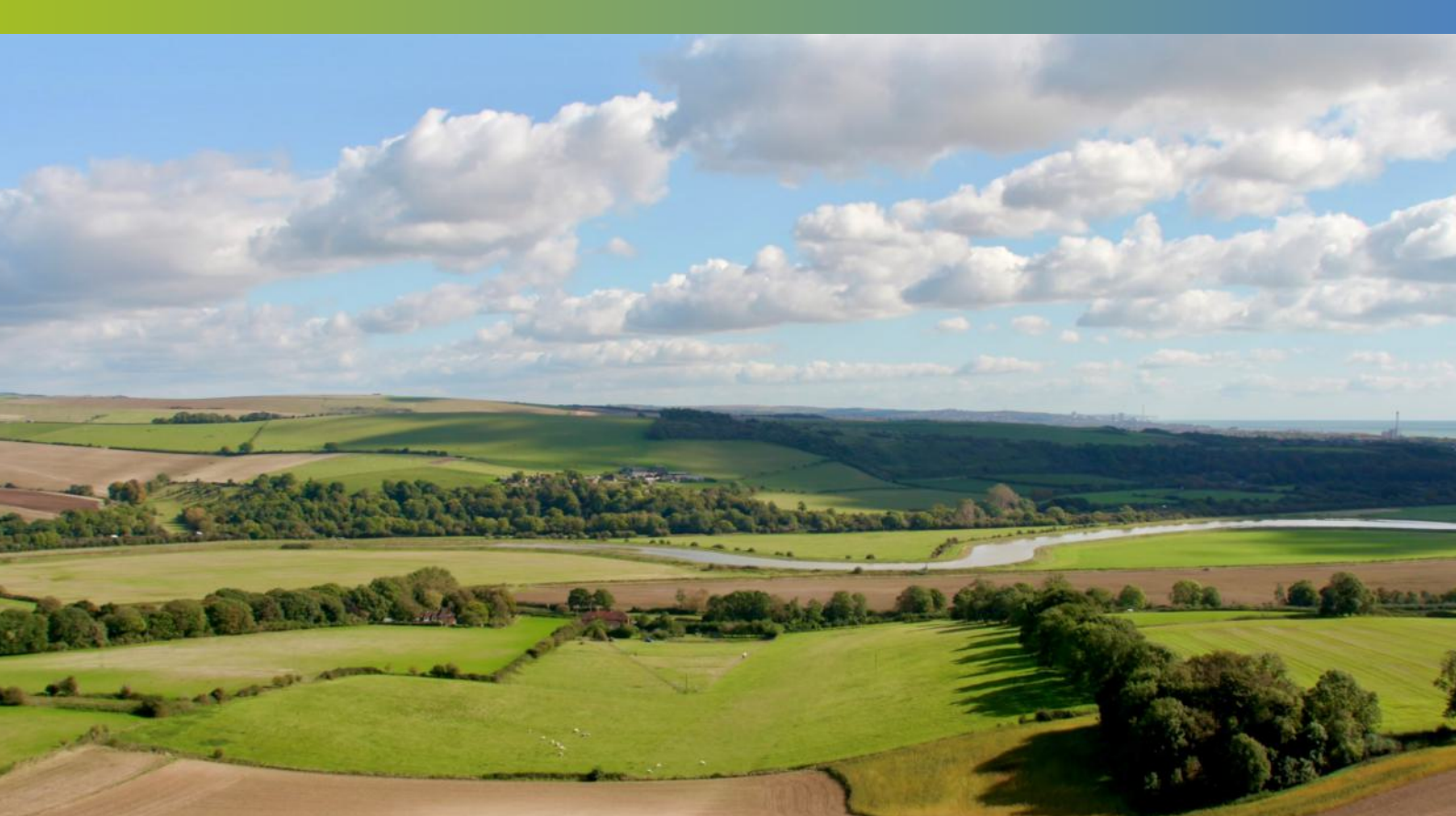
— Dr Becky Cooper MP (Worthing West)

*My recent visit to the Rampion wind farm site was impressive - the turbines themselves are spectacular up close. When Rampion 2 is completed, it will provide enough clean electricity to power the whole of Sussex, making a significant contribution to our net zero ambitions. Unlike fossil fuels, which are sold on global markets, 100% of our wind energy is consumed here in the UK, cutting energy bills while delivering genuine energy security and the well-paid green jobs our communities need.*

— John Milne MP (Horsham)

*I had a brilliant time visiting the Rampion Offshore Wind Farm; it was great to see this fantastic clean power project up close and learn more about it. The clean power it produces for the UK is crucial in tackling climate change, so I'm delighted that the government has now granted development consent for Rampion 2.*

— Tom Rutland MP (East Worthing & Shoreham)



# Rampion cable route successfully reinstated

See the video and pictures at:

[rampion2.com/rampion-reinstatement](https://rampion2.com/rampion-reinstatement)

**An aerial inspection of Rampion Offshore Wind Farm's underground onshore cable route has revealed that evidence of the temporary construction has almost completely disappeared from view, thanks to the successful reinstatement of the land it passes through.**

Rampion's cable route reinstatement was completed in 2019, and the project is now halfway through a 10-year monitoring and management plan, meaning the land will continue to be monitored every year until 2029 with additional planting and seeding undertaken, if required.

The 27-kilometre Rampion cable route makes landfall under the beach at Brooklands Pleasure Park in Worthing and follows a course under the railway, the A27 and the River Adur. It then heads northeast past the Old Cement Works, across the South Downs and the Weald up to the final connection point at a new substation next to Bolney National Grid Substation in Mid Sussex.

“*We will bury the new Rampion 2 cables underground for the entirety of the route using a trench, ducting and backfill method of installation to allow for faster reinstatement, so any inconvenience will be temporary, during construction only. The practical experience gained from the work undertaken delivering the Rampion project has been fed into the planning for Rampion 2.*”

— Chris Tomlinson, Development & Stakeholder Manager for Rampion 2



The Rampion cable route is entirely underground and the overhead lines and pylons shown in the video footage are all connected to other power stations or grid networks unrelated to the Rampion Wind Farm.

During the Rampion 2 consultations, many people asked why the existing Rampion cables were not being used. This is because they do not have the capacity to accommodate three times more power from Rampion 2 to connect the project to the transmission network.

## Next steps

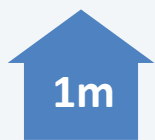
The Rampion 2 Team are busy working behind the scenes to continue progressing the project. As a Nationally Significant Infrastructure Project there is a considerable amount of work to deliver before the project is in a position to communicate a programme for construction, which includes:

- updating onshore and offshore surveys
- continuing onshore and offshore site investigations
- further engagement with statutory bodies and local communities
- design progression and refinement

The Team will continue to keep the Sussex community and stakeholders informed of activities as the design continues to be refined.

# Rampion 2 to generate clean energy, jobs and investment

If the final design accommodates the consented 1,200MW electrical generation capacity, Rampion 2 will...



Produce clean, green electricity for the equivalent of over 1 million homes<sup>1</sup>



Create demand for an average of over 4,000 jobs per year, during construction<sup>4</sup>



Generate three-quarters of all the electricity demands for Sussex<sup>3</sup>



Create 40-50 direct permanent jobs during operation and approx. 500 full time jobs across UK supply chain expenditure over the lifetime of the project



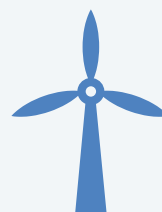
Save around 1.8 million tonnes<sup>2</sup> of CO<sub>2</sub> every year for 30-35 years



Secure a £multi-billion investment in construction



Combined with Rampion, power the entire electricity demand for Sussex<sup>3</sup>



Help support the UK Government aim to reach up to 43GW of offshore wind capacity

References: <sup>1</sup> Based on an average annual domestic household electricity consumption of 3,509 kWh (Dept Energy Security & Net Zero, 2024). <sup>2</sup> The calculation made using a static figure of 446g/kWh representing the energy mix in the UK (BEIS, July 2020). <sup>3</sup> Based on total electricity consumption (GWh) in East Sussex, West Sussex and Brighton & Hove 2022 (DESNZ, 2024). <sup>4</sup> Full time equivalent jobs employed by Rampion 2, Tier 1 contractors and the wider supply chain.



Did you  
know?

## Why Rampion 2 is much bigger than Rampion?

Turbine technology has advanced at a rapid rate. Since procuring Rampion over a decade ago, turbines have become more powerful and there have been significant improvements in what can be technologically achieved.

A scheme of fewer, larger turbines increases efficiency and reduces the cost of deployment thereby reducing cost to the end consumer. Larger rotor diameters also means greater spacing between turbines to avoid the 'wake' effect downwind which reduces electrical output.



## Have you been to the Rampion Visitor Centre?

Discover, learn and explore wind energy at the Rampion Visitor Centre in a fun and engaging way with a series of interactive exhibitions. Located in the seafront arches opposite the West Pier in Brighton, entry is FREE and further details can be found at: [rampionoffshore.com/visitor-centre](http://rampionoffshore.com/visitor-centre)



## Contact Us

Rampion 2 Wind Farm, Rampion  
Extension Development Ltd, Windmill  
Hill Business Park, Whitehill Way,  
Swindon, Wiltshire SN5 6PB

Tel. 0800 2800 886  
Web. [rampion2.com](http://rampion2.com)  
Email. [rampion2@rwe.com](mailto:rampion2@rwe.com)

Registered in England & Wales. Company Number: 12091939